



24 Wattlecliffe Drive Blaxland NSW

4 2 2

LOCATION - Magical setting, backing tranquil bushland. Situated in a much loved private estate with community playground, within a walk to shops, restaurants, cafes, rail, medical centre, fitness facilities and school - all within approximately 1km.

STYLE - Circa 2004, rendered brick, two storey residence. Offering a low maintenance, easy living lifestyle without compromising on internal spaces.

LAYOUT - Entry: 2 Living rooms, dining room, powder room, kitchen and laundry. Upstairs: Four double bedrooms with built in robes, primary with en suite and both walk-in robe & built-in. Large 3 way main bathroom with granite tops. 2.5 bathrooms overall.

FEATURES - Open plan gourmet kitchen with induction cooktop, pyrolytic oven, stone countertops, stainless steel

Type : House
Price : IN VIP \$1,250,000 - \$1,300,000
Land Size : 450 sqm
View : <https://www.chapmanrealestate.com.au/sale/nsw/blue-mountains-surrounds/blaxland/residential/house/8167257>

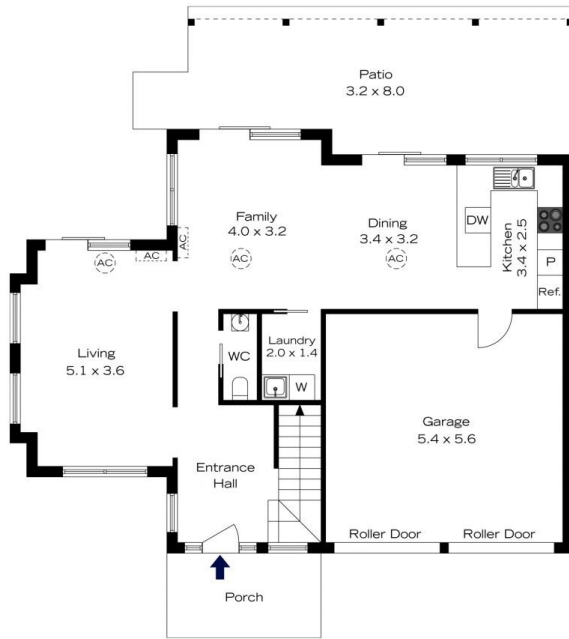


Milton Player
02 4739 4311

[For full version visit the website](https://www.chapmanrealestate.com.au)

<https://www.chapmanrealestate.com.au>

24 WATTLECLIFFE DRIVE, BLAXLAND



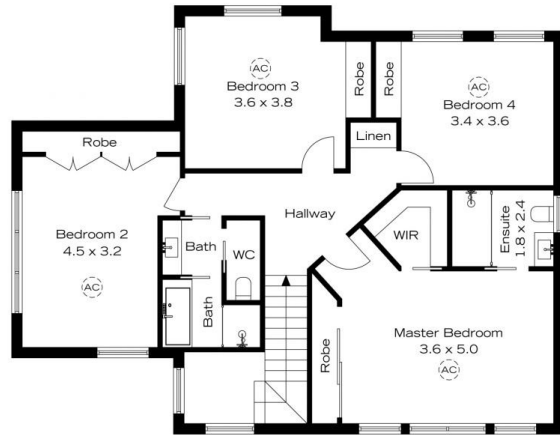
Ground Floor

INTERNAL
195 m²

EXTERNAL
39 m²

TOTAL
234 m²

The floor plan is not to scale; measurements are indicative and in metres. Exterior elements are not in position. Plans should not be relied on. Interested parties should make and rely on their own enquiries.



1st Floor

24 WATTLECLIFFE DRIVE, BLAXLAND



Ground Floor

INTERNAL
195 m²

EXTERNAL
39 m²

TOTAL
234 m²

The floor plan is not to scale; measurements are indicative and in metres. All features included in this 3D plan are for inspiration purposes only. This is not an exact replica of the property or the position of exterior elements. Plans should not be relied on. Interested parties should make and rely on their own enquiries.



1st Floor