



26 Reid Road Winmalee NSW

3 1

LOCATION - Set in a convenient location in Winmalee, the position is unbeatable, being close to transport, Winmalee Village and within walking distance to schools and parks.

STYLE - Situated on a 626m² (approximate) block, zoned R2, this charming 3 bedroom single level clad Blue Mountains cottage has been deeply cherished and maintained. The home is filled with an abundant amount of natural light & is a perfect home for a first home buyer or down-sizer.

LAYOUT - Substantial sized light filled living area, renovated kitchen/dining, 3 large bedrooms (2 with built ins), primary bedroom is extra large, updated bathroom, separate toilet, and large internal laundry with external access to fully fenced yard with established gardens.

FEATURES - Recently renovated kitchen, cypress timber

Type : House
Price : \$775,000 - \$815,000
Land Size : 626 sqm
View : <https://www.chapmanrealestate.com.au/sale/nsw/hawkesbury/winmalee/residential/house/8152741>

[For full version visit the website](https://www.chapmanrealestate.com.au)

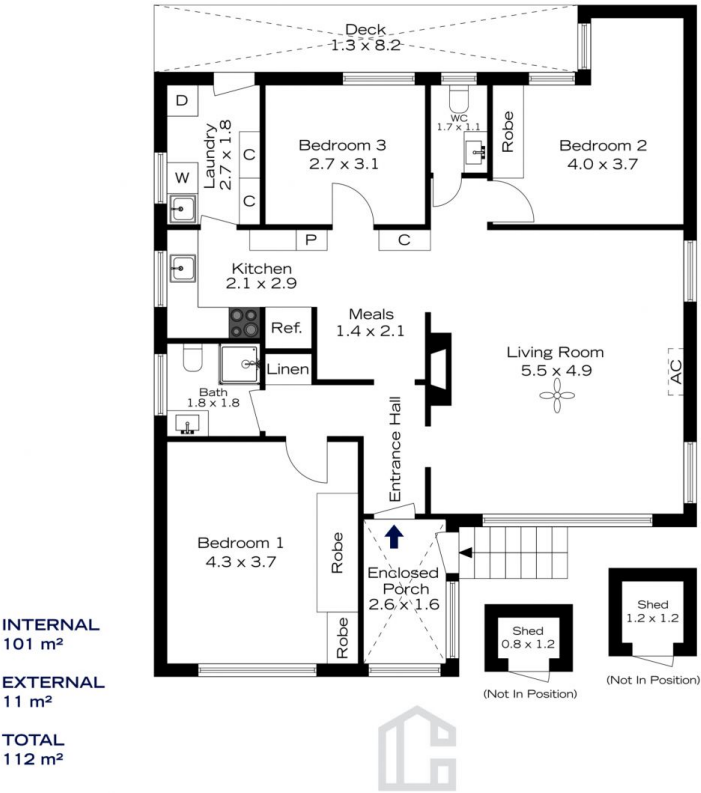
<https://www.chapmanrealestate.com.au>

26 REID ROAD, WINMALEE



The floor plan is not to scale; measurements are indicative and in metres. All features included in this 3D plan are for inspiration purposes only. This is not an exact replica of the property or the position of exterior elements. Plans should not be relied on. Interested parties should make and rely on their own enquiries.

26 REID ROAD, WINMALEE



The floor plan is not to scale; measurements are indicative and in metres. Exterior elements are not in position. Plans should not be relied on. Interested parties should make and rely on their own enquiries.