



9 Bourke Street Blaxland NSW

4 🛏 2 🚿 2 🚗

LOCATION: Tropical and private oasis, set in one of the most sought-after locations in Blaxland within an easy stroll to shops, school, bus, rail services and bush walks. Lusciously landscaped grounds with mature plantings on a flat block on 886sqm (approximately).

STYLE: This single level brick and tile residence has been meticulously maintained and painstakingly renovated to reflect the original charm. Inspired extensions add an incredibly desirable feel.

LAYOUT: Living room, huge conservatory (8m x 4.5m) with walls and ceilings of glass, dining room, 4 bedrooms plus study, master with ensuite, 2 bathrooms main with marble tops and dual basins, large laundry with built in cupboards and bench top.

FEATURES: Open-plan granite gourmet kitchen with

Type : House
Price : \$1,240,000 - \$1,280,000
Land Size : 886 sqm
View : <https://www.chapmanrealestate.com.au/sale/nsw/blue-mountains-surrounds/blaxland/residential/house/8152031>

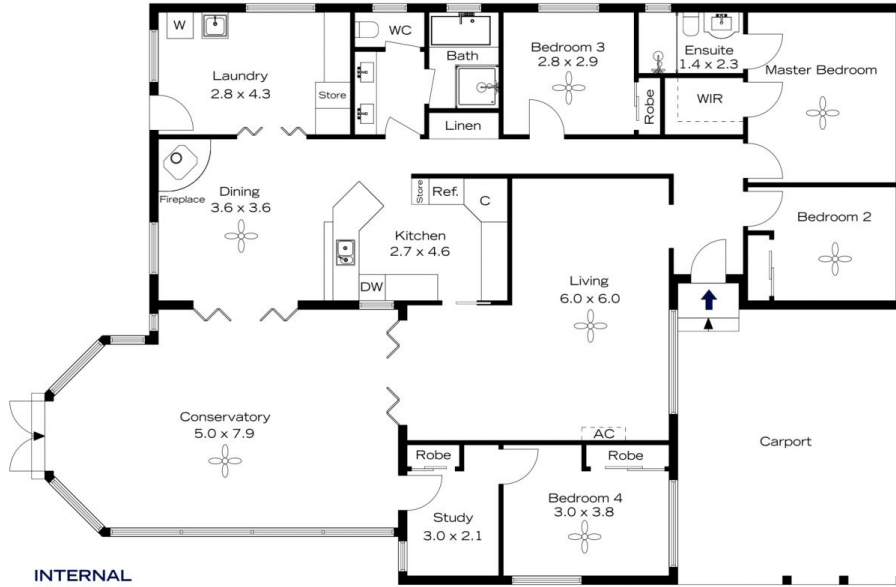


Sharon Lampert
02 4739 4311

[For full version visit the website](https://www.chapmanrealestate.com.au)

<https://www.chapmanrealestate.com.au>

9 BOURKE STREET, BLAXLAND



INTERNAL
187 m²

EXTERNAL
34 m²

TOTAL
221 m²



The floor plan is not to scale; measurements are indicative and in metres. Exterior elements are not in position. Plans should not be relied on. Interested parties should make and rely on their own enquiries.

9 BOURKE STREET, BLAXLAND



INTERNAL
187 m²

EXTERNAL
34 m²

TOTAL
221 m²



The floor plan is not to scale; measurements are indicative and in metres. All features included in this 3D plan are for inspiration purposes only. This is not an exact replica of the property or the position of exterior elements. Plans should not be relied on. Interested parties should make and rely on their own enquiries.