



3 Dungara Place Winmalee NSW

3 1 1

LOCATION - Positioned on the high side of a peaceful & leafy cul-de-sac, conveniently located in the Halcyon Estate.

STYLE - Appealing single level brick and tile home, set on approximately 916m² block of R2 zoned level land.

LAYOUT - Extra large living room, three generous bedrooms all with built-ins, main bathroom with separate toilet, casual meals and formal dining.

FEATURES - Large updated kitchen with breakfast bar, reverse cycle air conditioning, internal laundry, kitchen looks out through covered patio and onto the large level backyard which consists of established gardens including mulberry, lemon, cumquat, and orange trees. This home is ready for you to make your own and is a must to inspect.

Type : House
Price : \$870,000 - \$900,000
Land Size : 916.9 sqm
View : <https://www.chapmanrealestate.com.au/sale/nsw/hawkesbury/winmalee/residential/house/8137684>

[For full version visit the website](https://www.chapmanrealestate.com.au)

<https://www.chapmanrealestate.com.au>

3 DUNGARA PLACE, WINMALEE



INTERNAL
140 m²

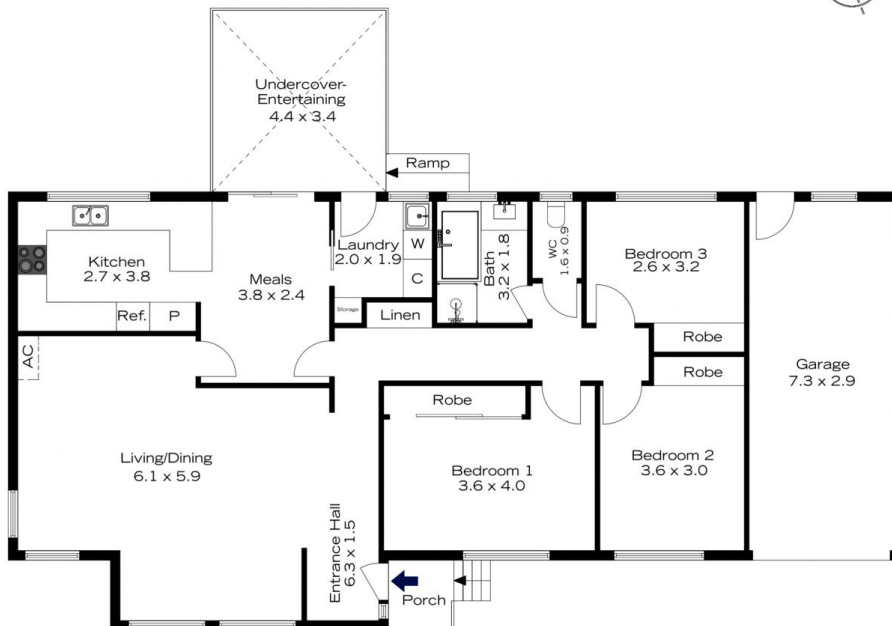
EXTERNAL
16 m²

TOTAL
156 m²



The floor plan is not to scale; measurements are indicative and in metres. All features included in this 3D plan are for inspiration purposes only. This is not an exact replica of the property or the position of exterior elements. Plans should not be relied on. Interested parties should make and rely on their own enquiries.

3 DUNGARA PLACE, WINMALEE



INTERNAL
140 m²

EXTERNAL
16 m²

TOTAL
156 m²



The floor plan is not to scale; measurements are indicative and in metres. Exterior elements are not in position. Plans should not be relied on. Interested parties should make and rely on their own enquiries.