



### 38 Springfield Crescent Springwood NSW

3 1 2

**LOCATION** - Set in a desirable location in one of Springwood's most charming pockets. The position is unbeatable, being close to transport and within walking distance to town, schools, the golf course, and parks.

**STYLE** - Situated on a very level 695.6m<sup>2</sup> (approximate) block, zoned R2. This neatly maintained 3 bedroom single-level mountains cottage boasts a classic design, positioned perfectly on a flat block.

**LAYOUT** - Substantial sized living area, updated kitchen/dining, 3 large bedrooms (2 with built ins), bathroom and external laundry.

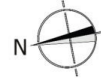
**FEATURES** - Recently updated kitchen with dishwasher, cypress timber flooring throughout, renovated bathroom, 3 x split reverse cycle A/C systems, ceiling fans throughout, large covered/screened timber deck area that opens to a

**Type** : House  
**Price** : \$ 950,050  
**Land Size** : 695.6 sqm  
**View** : <https://www.chapmanrealestate.com.au/sale/nsw/hawkesbury/springwood/residential/home/8137373>

[For full version visit the website](#)

<https://www.chapmanrealestate.com.au>

# 38 SPRINGFIELD CRESCENT, SPRINGWOOD



**INTERNAL**  
105 m<sup>2</sup>

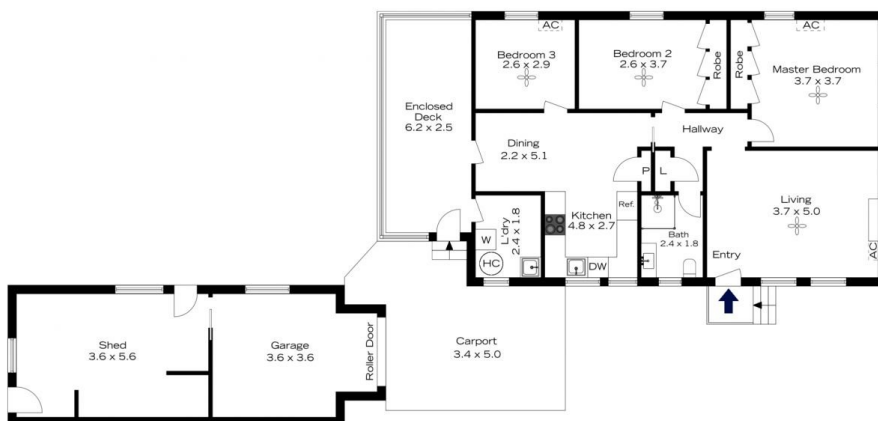
**EXTERNAL**  
24 m<sup>2</sup>

**TOTAL**  
129 m<sup>2</sup>



The floor plan is not to scale; measurements are indicative and in metres. All features included in this 3D plan are for inspiration purposes only. This is not an exact replica of the property or the position of exterior elements. Plans should not be relied on. Interested parties should make and rely on their own enquiries.

# 38 SPRINGFIELD CRESCENT, SPRINGWOOD



**INTERNAL**  
105 m<sup>2</sup>

**EXTERNAL**  
24 m<sup>2</sup>

**TOTAL**  
129 m<sup>2</sup>



The floor plan is not to scale; measurements are indicative and in metres. Exterior elements are not in position. Plans should not be relied on. Interested parties should make and rely on their own enquiries.