



**3/2 Dora Street Katoomba NSW**

3 2 2

**LOCATION** - Easy access to World Heritage listed national park, Katoomba village & the vibrant restaurant & café scene, arts & culture, rail, bus, Katoomba Hospital & the Great Western Highway.

**STYLE** - Brand new luxury townhouses redefining expectations of living and setting a new standard for homes in Katoomba and the Blue Mountains region.

**LAYOUT** - Generous open plan living, three double sized bedrooms, main with ensuite access, all with robes, additional study area ideal to work from home, generous court yards with a mix of grass and hard surfaces, single garage and additional off street parking.

<b>Type</b>	: Townhouse
<b>Price</b>	: \$ 929,000
<b>Building Size</b>	: 172 sqm
<b>Land Size</b>	: 267 sqm
<b>View</b>	: <a href="https://www.chapmanrealestate.com.au/sale/nsw/blue-mountains-surrounds/katoomba/residential/townhouse/8137249">https://www.chapmanrealestate.com.au/sale/nsw/blue-mountains-surrounds/katoomba/residential/townhouse/8137249</a>

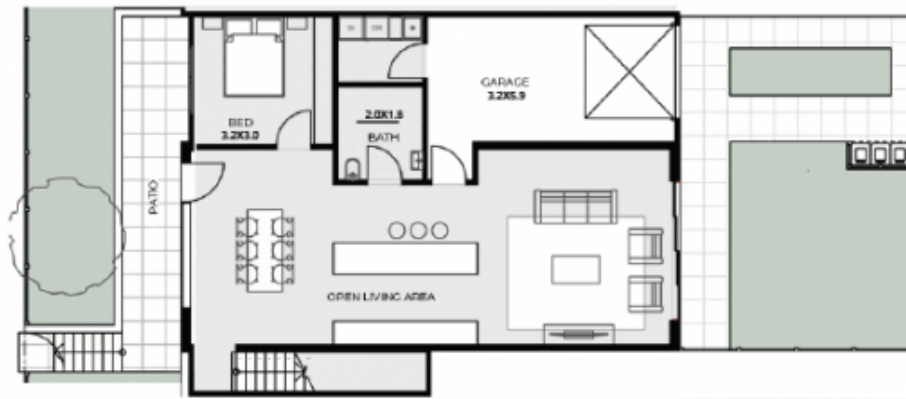
[For full version visit the website](#)



**Jonathan Crisp**  
02 4754 8266



**Hayley Clifton**  
02 4782 5945

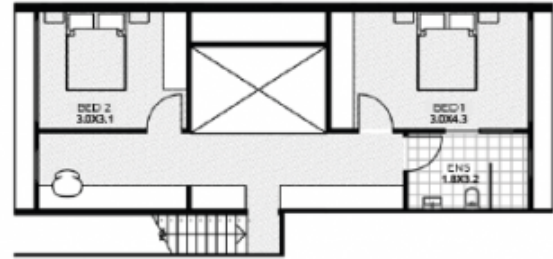


### UNIT 3

3 Bed / 2 Bath / 2 Car

172m<sup>2</sup> internal floor space

267m<sup>2</sup> overall



Disclaimer: Unit areas are just estimates and are to be used as a guide only. Dimensions, areas, fittings and fixtures are subject to change and adjustment during the course of construction