



### 17 Brookdale Terrace Glenbrook NSW

3 2 2

**LOCATION** - Ideally located in a peaceful cul-de-sac in the sought after village side of Glenbrook (with easy access to the M4 providing direct routes into major CBD's) & within walking distance to the village centre, shops, restaurants, cafes, oval, playgrounds, cinema, school, rail and bus.

**STYLE** - Two storey brick home with tile roof sitting proudly on a lovingly maintained 695.6m2 (approx.) block.

**LAYOUT** - Easy living at its best; open plan kitchen/dining overlooking the rear veranda and gardens, sun-lit living room plus a second living at the front of the property, 3 generous bedrooms with built in robes, 2.5 bathrooms overall, fabulous outdoor area overlooking the landscaped gardens, laundry.

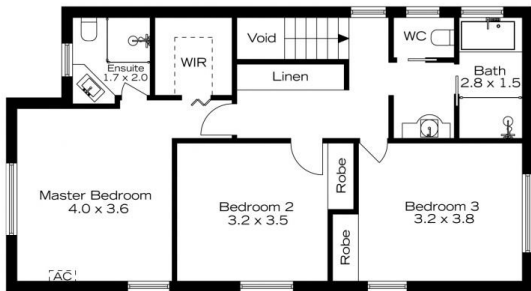
[For full version visit the website](https://www.chapmanrealestate.com.au)

**Type** : House  
**Price** : \$1,260,000 - \$1,320,000  
**Land Size** : 695.6 sqm  
**View** : <https://www.chapmanrealestate.com.au/sale/nsw/blue-mountains-surrounds/glenbrook/residential/house/8137208>



**Sarah Watson**  
02 4739 4311

# 17 BROOKDALE TERRACE, GLENBROOK

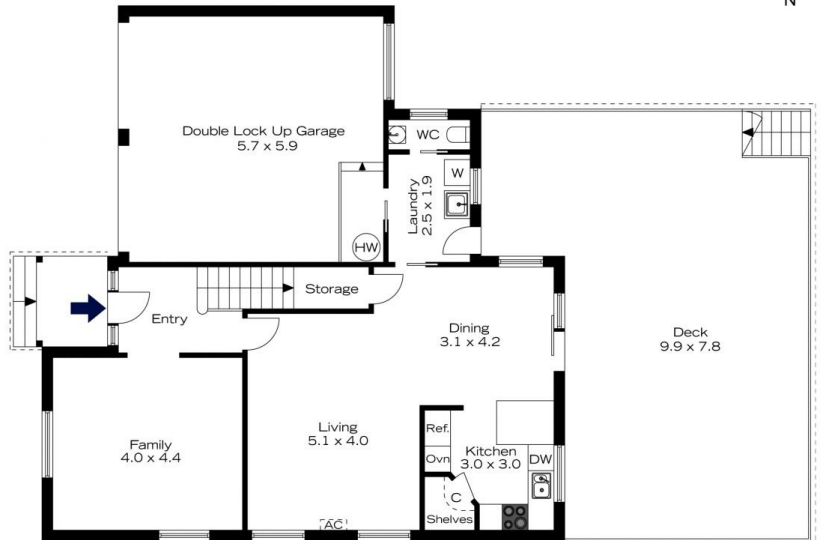


1st Floor

**INTERNAL**  
175 m<sup>2</sup>

**EXTERNAL**  
68 m<sup>2</sup>

**TOTAL**  
243 m<sup>2</sup>



Ground Floor



The floor plan is not to scale; measurements are indicative and in metres. Exterior elements are not in position. Plans should not be relied on. Interested parties should make and rely on their own enquiries.

# 17 BROOKDALE TERRACE, GLENBROOK



1st Floor

**INTERNAL**  
175 m<sup>2</sup>

**EXTERNAL**  
68 m<sup>2</sup>

**TOTAL**  
243 m<sup>2</sup>



Ground Floor



The floor plan is not to scale; measurements are indicative and in metres. All features included in this 3D plan are for inspiration purposes only. This is not an exact replica of the property or the position of exterior elements. Plans should not be relied on. Interested parties should make and rely on their own enquiries.