



51 Raymond Road Springwood NSW

2 1

LOCATION - Springwood is the 2024 standout surging suburb of the Lower Mountains, and this ultra desirable location on Raymond Road is not to be missed, walk to Springwood village 450m, walk to Lawson lookout, peaceful and convenient.

STYLE - Original style cottage situated on a very level 695.6m2 block, zone R2.

LAYOUT - Two separate living rooms, two good sized bedrooms, 2nd bedroom has study with separate entry ideal for business, galley style kitchen, bathroom and external laundry.

FEATURES - Great condition throughout, air conditioning, fan, slow combustion fire, timber floors, updated kitchen and bathroom, side access to rear yard, level yard zoned R2, peaceful highly sought after location and easy stroll to

Type : House
Price : \$ 950,000
Land Size : 695.6 sqm
View : <https://www.chapmanrealestate.com.au/sale/nsw/hawkesbury/springwood/residential/house/8131684>

[For full version visit the website](https://www.chapmanrealestate.com.au)

<https://www.chapmanrealestate.com.au>

51 RAYMOND ROAD, SPRINGWOOD



INTERNAL
82 m²

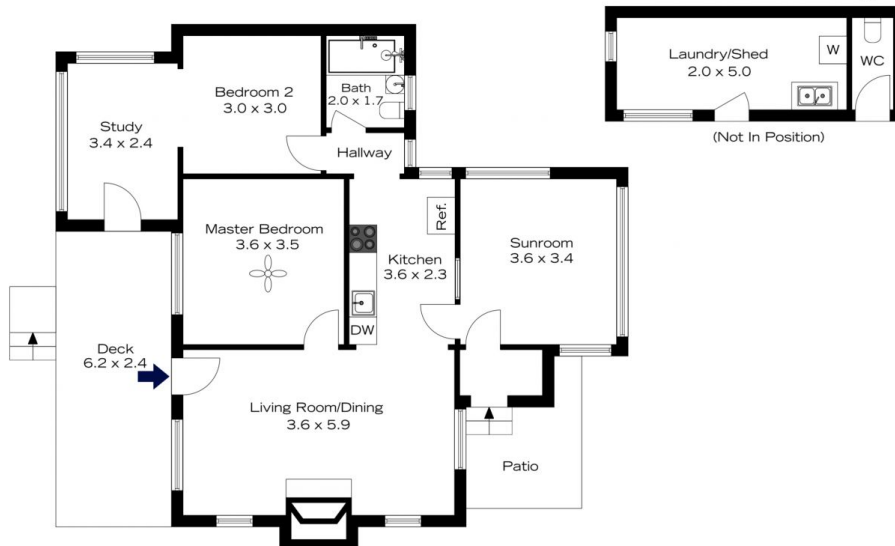
EXTERNAL
22 m²

TOTAL
104 m²



The floor plan is not to scale; measurements are indicative and in metres. All features included in this 3D plan are for inspiration purposes only. This is not an exact replica of the property or the position of exterior elements. Plans should not be relied on. Interested parties should make and rely on their own enquiries.

51 RAYMOND ROAD, SPRINGWOOD



INTERNAL
82 m²

EXTERNAL
22 m²

TOTAL
104 m²



The floor plan is not to scale; measurements are indicative and in metres. Exterior elements are not in position. Plans should not be relied on. Interested parties should make and rely on their own enquiries.