



83 Douglas Street Springwood NSW

3 2 2

LOCATION - Peacefully positioned in a popular Springwood street, 500m from Springwood Aquatic Centre, within 800m of newly upgraded Buttenshaw Park, 2.2km to train station, 200m to bus and convenient to stunning bush walks & in demand schools.

STYLE - Circa 1986 built Masterton single level brick home with tile roof on 736.7m2 block peacefully set and offering that highly sought after low maintenance lifestyle.

LAYOUT - 2 living areas, large open kitchen family room and separate formal lounge with bar area, 3 bedrooms all with built in robes, master with ensuite, and second family bathroom with separate toilet, laundry with convenient external access and stunning enclosed landscaped bush backyard with paved outdoor undercover entertaining area.

FEATURES - Generous central family kitchen with an

Type : House
Price : \$ 920,000
Land Size : 736.7 sqm
View : <https://www.chapmanrealestate.com.au/sale/nsw/hawkesbury/springwood/residential/house/8129726>

[For full version visit the website](https://www.chapmanrealestate.com.au)

<https://www.chapmanrealestate.com.au>

83 DOUGLAS STREET, SPRINGWOOD



INTERNAL
171 m²

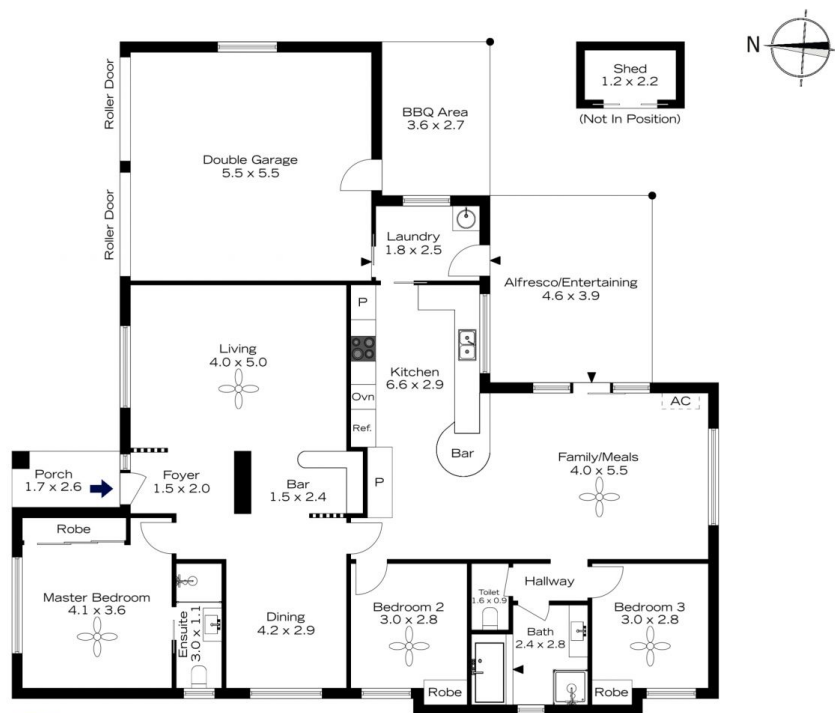
EXTERNAL
30 m²

TOTAL
201 m²



The floor plan is not to scale; measurements are indicative and in metres. All features included in this 3D plan are for inspiration purposes only. This is not an exact replica of the property or the position of exterior elements. Plans should not be relied on. Interested parties should make and rely on their own enquiries.

83 DOUGLAS STREET, SPRINGWOOD



INTERNAL
171 m²

EXTERNAL
30 m²

TOTAL
201 m²



The floor plan is not to scale; measurements are indicative and in metres. Exterior elements are not in position. Plans should not be relied on. Interested parties should make and rely on their own enquiries.