



Katoomba

3 2 2

LOCATION - Located in a sought-after pocket of Katoomba, just 600m from the famous Echo Point and Three Sisters lookout. The convenient location allows you easy access to the town with all its shops and cafes in 1.3km, and a 1.9km walk to the train station.

STYLE - Single level home of brick construction with tile and Colorbond roof.

LAYOUT - This family home has a large open plan living space with full-length windows overlooking the mature gardens, sliding doors leading out to the undercover entertainment area. Modern kitchen with gas cooktop and electric oven, soft-close cabinets and plenty of storage. Three generous bedrooms with the main having floor-to-ceiling windows and a door onto the undercover veranda. The home is finished with two bathrooms, a study

Price : \$995,000 - \$1,065,000
Land Size : 645 sqm
View : <https://www.chapmanrealestate.com.au/sale/nsw/blue-mountains-surrounds/katoomba/residential/house/8119479>



Hayley Clifton
02 4782 5045

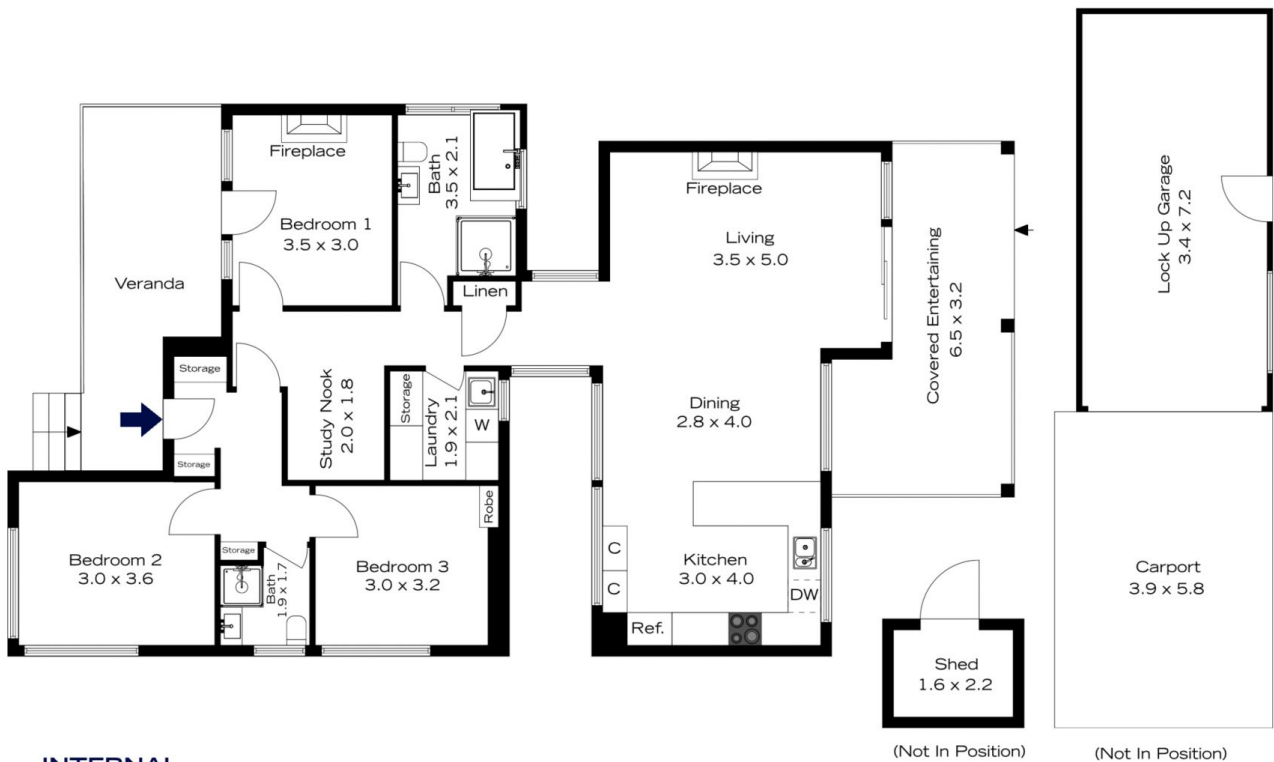


INTERNAL
105 m²

EXTERNAL
32 m²

TOTAL
137 m²

The floor plan is not to scale; measurements are indicative and in metres. All features included in this 3D plan are for inspiration purposes only. This is not an exact replica of the property or the position of exterior elements. Plans should not be relied on. Interested parties should make and rely on their own enquiries.



INTERNAL
105 m²

EXTERNAL
32 m²

TOTAL
137 m²

The floor plan is not to scale; measurements are indicative and in metres. Exterior elements are not in position. Plans should not be relied on. Interested parties should make and rely on their own enquiries.