



## 26 Valley Road Hazelbrook NSW

2 1 1

**LOCATION** - Situated in a desirable area of Hazelbrook, set back from the road is this well-maintained home. Conveniently located within 1.2km approx. of the village shops, local school, train station and other local amenities, not to mention the beautiful surrounds of stunning national parks and walking trails.

**STYLE** - Single level brick and tile home sat on a large block of approx. 980m2.

**LAYOUT** - Light-filled open plan living/dining area leading through to the kitchen. Two good-sized bedrooms, main with built-ins. Bathroom with bath and separate shower. Entrance hallway with linen cupboard. Undercover patio, large laundry and second toilet, garage and gazebo.

[For full version visit the website](https://www.chapmanrealestate.com.au)

**Type** : House  
**Land Size** : 980.1 sqm  
**View** : <https://www.chapmanrealestate.com.au/sale/nsw/blue-mountains-surrounds/hazelbrook/residential/house/8112096>



**Hayley Clifton**  
02 4758 8603



## 26 VALLEY ROAD, HAZELBROOK



**INTERNAL**  
80 m<sup>2</sup>

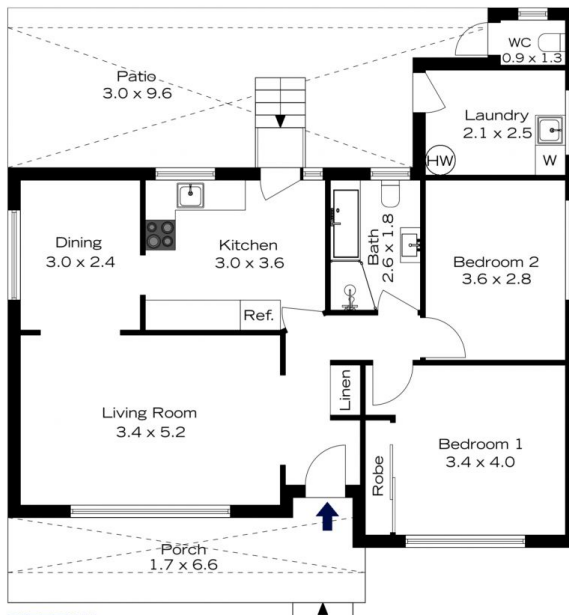
**EXTERNAL**  
38 m<sup>2</sup>

**TOTAL**  
118 m<sup>2</sup>



The floor plan is not to scale; measurements are indicative and in metres. All features included in this 3D plan are for inspiration purposes only. This is not an exact replica of the property or the position of exterior elements. Plans should not be relied on. Interested parties should make and rely on their own enquiries.

## 26 VALLEY ROAD, HAZELBROOK



**INTERNAL**  
80 m<sup>2</sup>

**EXTERNAL**  
38 m<sup>2</sup>

**TOTAL**  
118 m<sup>2</sup>



The floor plan is not to scale; measurements are indicative and in metres. Exterior elements are not in position. Plans should not be relied on. Interested parties should make and rely on their own enquiries.

