

## 29 Hume Road Lapstone NSW

3 1 1

**LOCATION:** Located in a peaceful, leafy pocket of Lapstone. Approximately 400m to Lapstone station and accessible to the tennis courts, netball courts, oval, Lapstone preschool and public school. Close to Glenbrook village (approx. 2.6km) offering numerous eateries, shops, park and cinema.

**STYLE:** Brick and tile home set on a generous and low maintenance 786m<sup>2</sup> (approx.) block with filtered city & river views and a bush feel whilst being close enough to public transport and M4.

**LAYOUT:** Uncomplicated & easy living at its best - generous family living room, open kitchen/dining, 3 bedrooms (2 with built in robes), bright and spacious

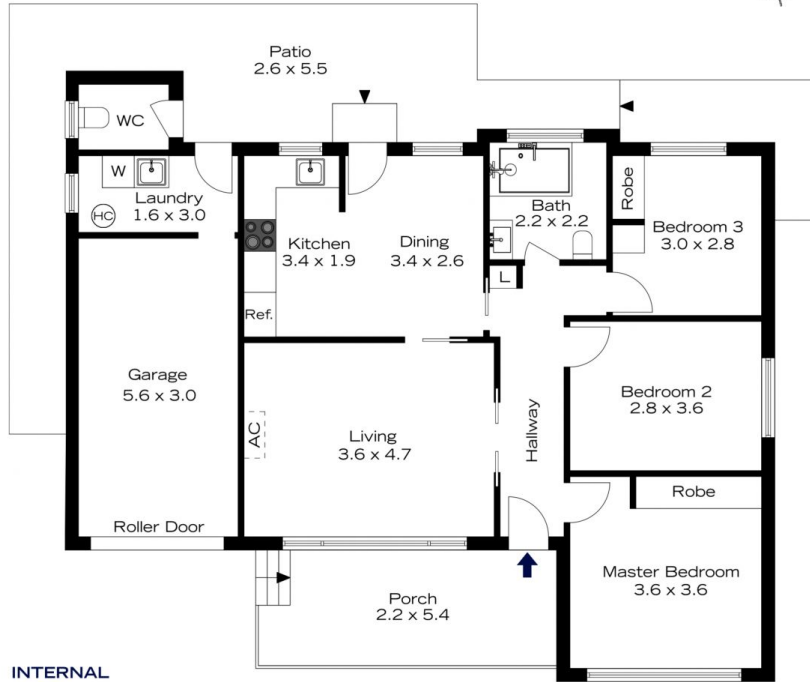
[For full version visit the website](https://www.chapmanrealestate.com.au)

**Type** : House  
**Price** : \$ 1,195,000  
**Land Size** : 784.1 sqm  
**View** : <https://www.chapmanrealestate.com.au/sale/nsw/blue-mountains-surrounds/lapstone/residential/house/8110327>



**Sarah Watson**  
02 4739 4311

29 HUME ROAD, LAPSTONE



**INTERNAL**  
103 m<sup>2</sup>

**EXTERNAL**  
46 m<sup>2</sup>

**TOTAL**  
149 m<sup>2</sup>



The floor plan is not to scale; measurements are indicative and in metres. Exterior elements are not in position. Plans should not be relied on. Interested parties should make and rely on their own enquiries.

29 HUME ROAD, LAPSTONE



**INTERNAL**  
103 m<sup>2</sup>

**EXTERNAL**  
46 m<sup>2</sup>

**TOTAL**  
149 m<sup>2</sup>



The floor plan is not to scale; measurements are indicative and in metres. All features included in this 3D plan are for inspiration purposes only. This is not an exact replica of the property or the position of exterior elements. Plans should not be relied on. Interested parties should make and rely on their own enquiries.