



278 Singles Ridge Road Yellow Rock NSW

3 1 2

LOCATION - Situated on a spacious 784.1m² level block (approx.) Set in a tranquil part of Yellow Rock, conveniently located close to local parks, schools, and scenic bush walks. Enjoy easy access with a short drive (approx. 10 minutes) to Winmalee Shopping Centre and Springwood Village.

STYLE - Beautiful single-level brick home with modern updates, surrounded by tranquil bush land.

LAYOUT - 2 separate living areas, separate dining area 3 bedrooms (all with built ins), good sized bathroom, an external laundry with toilet.

FEATURES - Large modern kitchen with stainless steel appliances, natural gas, combustion fire, 2 x reverse cycle A/C systems, ceiling fans, timber flooring throughout, fully fenced yard, side access, separate studio with workshop

Type : House
Price : \$ 900,000
Land Size : 784.1 sqm
View : <https://www.chapmanrealestate.com.au/sale/nsw/hawkesbury/yellow-rock/residential/house/8105516>

[For full version visit the website](https://www.chapmanrealestate.com.au)

<https://www.chapmanrealestate.com.au>

278 SINGLES RIDGE ROAD, WINMALEE



INTERNAL
107 m²

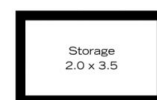
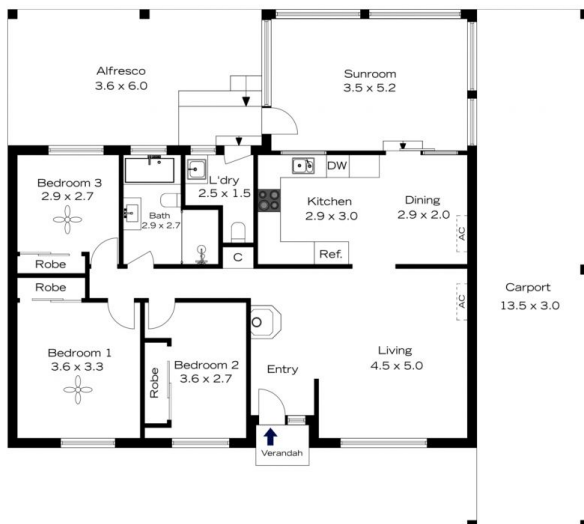
EXTERNAL
65 m²

TOTAL
172 m²

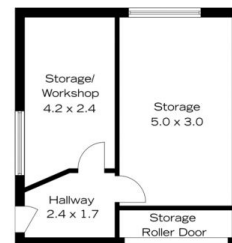


The floor plan is not to scale; measurements are indicative and in metres. All features included in this 3D plan are for inspiration purposes only. This is not an exact replica of the property or the position of exterior elements. Plans should not be relied on. Interested parties should make and rely on their own enquiries.

278 SINGLES RIDGE ROAD, WINMALEE



(Not In Position)



(Not In Position)

INTERNAL
107 m²

EXTERNAL
65 m²

TOTAL
172 m²



The floor plan is not to scale; measurements are indicative and in metres. Exterior elements are not in position. Plans should not be relied on. Interested parties should make and rely on their own enquiries.