

### 8 Shamrock Close Winmalee NSW

4 2 3

**LOCATION:** Set beautifully on the high side of the street in a tightly held and quiet cul de sac conveniently located within 1.5km of popular schools, Winmalee Shopping Village, cafes, fantastic Summerhayes Park and bush walks, 350m to bus.

**STYLE:** Two-storey brick veneer home with Colorbond roof sitting on an elevated 712.7m2 approx block, with gorgeous landscaped gardens and so much to love.

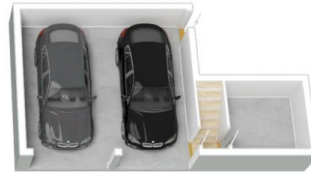
**LAYOUT:** Two separate light-filled living spaces with brand new flooring, featuring open plan dining and lounge room space off the kitchen and formal dining/ family room. Four great sized bedrooms, all with built in robes, master with a walk in robe, bright ensuite and undercover Juliette

**Type** : House  
**Price** : \$ 1,180,000  
**Land Size** : 712.7 sqm  
**View** : <https://www.chapmanrealestate.com.au/sale/nsw/hawkesbury/winmalee/residential/house/8104923>

[For full version visit the website](https://www.chapmanrealestate.com.au)

<https://www.chapmanrealestate.com.au>

8 SHAMROCK CLOSE, WINMALEE



Lower Ground Floor

Ground Floor

**INTERNAL**  
215 m<sup>2</sup>

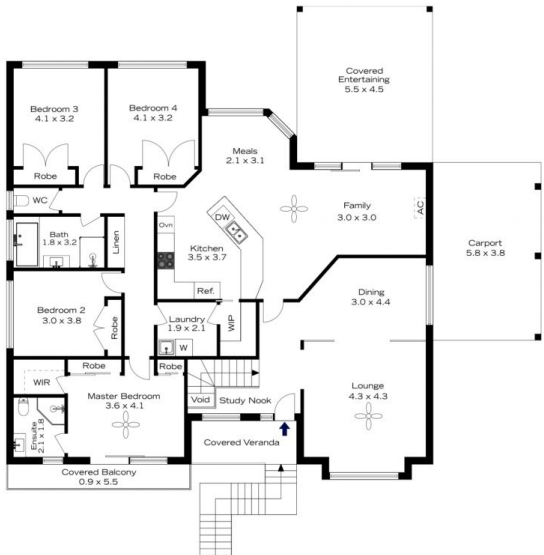
**EXTERNAL**  
61 m<sup>2</sup>

**TOTAL**  
276 m<sup>2</sup>



The floor plan is not to scale; measurements are indicative and in metres. All features included in this 3D plan are for inspiration purposes only. This is not an exact replica of the property or the position of exterior elements. Plans should not be relied on. Interested parties should make and rely on their own enquiries.

8 SHAMROCK CLOSE, WINMALEE



Lower Ground Floor

Ground Floor

**INTERNAL**  
215 m<sup>2</sup>

**EXTERNAL**  
61 m<sup>2</sup>

**TOTAL**  
276 m<sup>2</sup>



The floor plan is not to scale; measurements are indicative and in metres. Exterior elements are not in position. Plans should not be relied on. Interested parties should make and rely on their own enquiries.