



### 10 Killara Crescent Winmalee NSW

3 2 1

**LOCATION** - Positioned on the high side of a peaceful & leafy street, conveniently located within 450m of Winmalee Shopping Village, local primary school, sought after day care, medical centres & multiple bus stops.

**STYLE** - Appealing single level rendered brick home with tile roof, set on approximately 619.7m<sup>2</sup> block of R2 zoned land with detached lock up garage, pebblecrete pool and fully fenced rear yard.

**LAYOUT** - Two generous in size living spaces, 3 double size bedrooms all with built in robes, large ensuite with separate bath and shower, additional main bathroom & separate laundry with convenient external access and third shower.

**FEATURES** - Large Tasmania Oak kitchen with dedicated dining & meals area, reverse cycle AC (service needed)

**Type** : House  
**Price** : \$ 940,000  
**Land Size** : 619.7 sqm  
**View** : <https://www.chapmanrealestate.com.au/sale/nsw/hawkesbury/winmalee/residential/house/8098729>

[For full version visit the website](https://www.chapmanrealestate.com.au)

<https://www.chapmanrealestate.com.au>

# 10 KILLARA CRESCENT, WINMALEE



**INTERNAL**  
178 m<sup>2</sup>

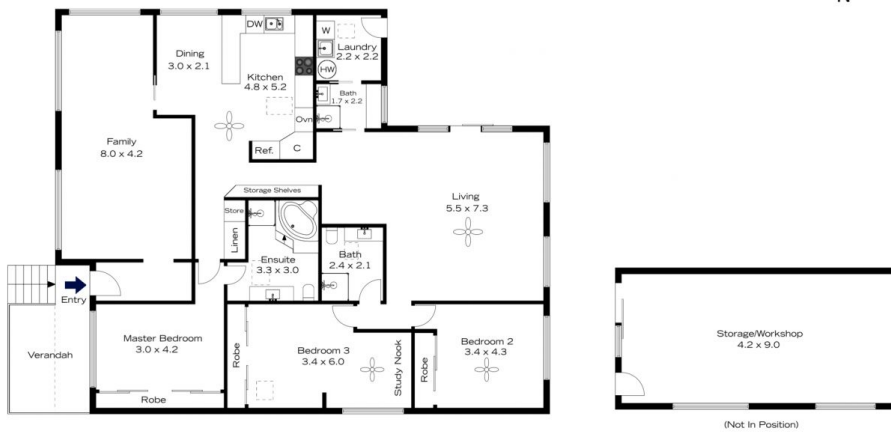
**EXTERNAL**  
11 m<sup>2</sup>

**TOTAL**  
189 m<sup>2</sup>



The floor plan is not to scale; measurements are indicative and in metres. All features included in this 3D plan are for inspiration purposes only. This is not an exact replica of the property or the position of exterior elements. Plans should not be relied on. Interested parties should make and rely on their own enquiries.

# 10 KILLARA CRESCENT, WINMALEE



**INTERNAL**  
178 m<sup>2</sup>

**EXTERNAL**  
11 m<sup>2</sup>

**TOTAL**  
189 m<sup>2</sup>



The floor plan is not to scale; measurements are indicative and in metres. Exterior elements are not in position. Plans should not be relied on. Interested parties should make and rely on their own enquiries.