



20 Martin Place Linden NSW

3 2 1

LOCATION - Positioned on a 835m2 (approx.) block, this Mountain home is peacefully set in a leafy yet convenient location, approximately 1.2kms to Linden train station and within a short drive either up or down the mountain to shops, schools, cafes and restaurants.

STYLE - A double brick home with a colourbond roof that requires your finishing touches, offering multi-purpose living with glorious bush and city views.

LAYOUT- Main home consists of a large bright combined living/dining area, two bedrooms, bathroom and internal laundry nook. Self-contained studio consists of living/bedroom, and bathroom.

Type : House
Price : \$ 790,000
Land Size : 834.7 sqm
View : <https://www.chapmanrealestate.com.au/sale/nsw/blue-mountains-surrounds/linden/residential/house/8097911>

[For full version visit the website](https://www.chapmanrealestate.com.au)

<https://www.chapmanrealestate.com.au>

20 MARTIN PLACE, LINDEN



Ground Floor



Lower Ground Floor

INTERNAL
102 m²

EXTERNAL
40 m²

TOTAL
142 m²

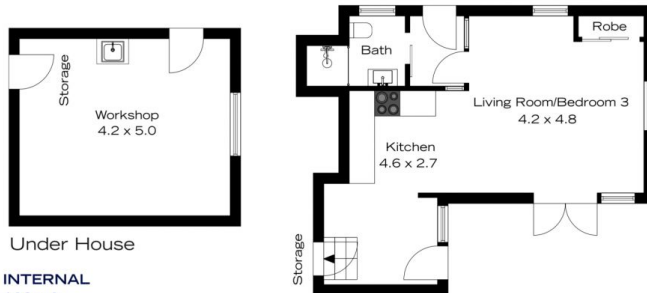


The floor plan is not to scale; measurements are indicative and in metres. All features included in this 3D plan are for inspiration purposes only. This is not an exact replica of the property or the position of exterior elements. Plans should not be relied on. Interested parties should make and rely on their own enquiries.

20 MARTIN PLACE, LINDEN



Ground Floor



Under House

Lower Ground Floor

INTERNAL
102 m²

EXTERNAL
40 m²

TOTAL
142 m²



The floor plan is not to scale; measurements are indicative and in metres. Exterior elements are not in position. Plans should not be relied on. Interested parties should make and rely on their own enquiries.