

### 4/3-5 White Cross Road Winmalee NSW

3 2 1

**LOCATION** - Conveniently located right across the road from Winmalee Shopping Centre, medical centre and bus stop.

**STYLE** - Beautifully presented two storey brick & Colorbond over 55's townhouse, in a complex of just six townhouses.

**LAYOUT** - Spacious lounge and dining room, three double bedrooms, two with built in wardrobes, large main bathroom and second bathroom off the internal laundry.

**FEATURES** - Spacious, updated kitchen to open dining area with breakfast bar and gas cooking, one bedroom conveniently located downstairs, two bedrooms upstairs,

**Type** : Townhouse

**Price** : \$690,000

**View** : <https://www.chapmanrealestate.com.au/sale/nsw/hawkesbury/winmalee/residential/townhouse/8086799>

[For full version visit the website](https://www.chapmanrealestate.com.au)

<https://www.chapmanrealestate.com.au>

4/3-5 WHITE CROSS ROAD, WINMALEE



Ground Floor



First Floor

**INTERNAL**  
145 m<sup>2</sup>

**EXTERNAL**  
16 m<sup>2</sup>

**TOTAL**  
161 m<sup>2</sup>

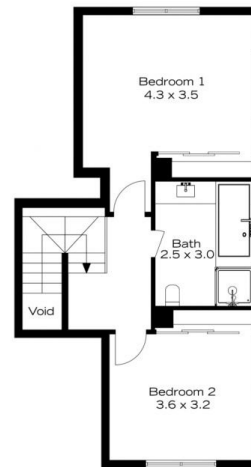


The floor plan is not to scale; measurements are indicative and in metres. All features included in this 3D plan are for inspiration purposes only. This is not an exact replica of the property or the position of exterior elements. Plans should not be relied on. Interested parties should make and rely on their own enquiries.

4/3-5 WHITE CROSS ROAD, WINMALEE



Ground Floor



First Floor

**INTERNAL**  
145 m<sup>2</sup>

**EXTERNAL**  
16 m<sup>2</sup>

**TOTAL**  
161 m<sup>2</sup>



The floor plan is not to scale; measurements are indicative and in metres. Exterior elements are not in position. Plans should not be relied on. Interested parties should make and rely on their own enquiries.