



29B Brook Road Glenbrook NSW

3 2 1

LOCATION - Ideally located on one of Glenbrook's premier and most sought-after streets famous for its mountain views and sunsets. The east village-side location is within a walk to national park lookouts and bush walks, public schools, ovals, park, tennis court, rail and bus services, village centre, shops, restaurants, cafes and cinema. Discover the increasingly popular lifestyle the Blue Mountains has to offer, less than an hour from Sydney.

STYLE - This single level brick and tile home sits in commanding position on an expansive 1,006sqm block and has an incredibly warm feel with stunning walls of glass to take in the magnificent views over the National Park.

LAYOUT - Uncomplicated floorplan comprising 3

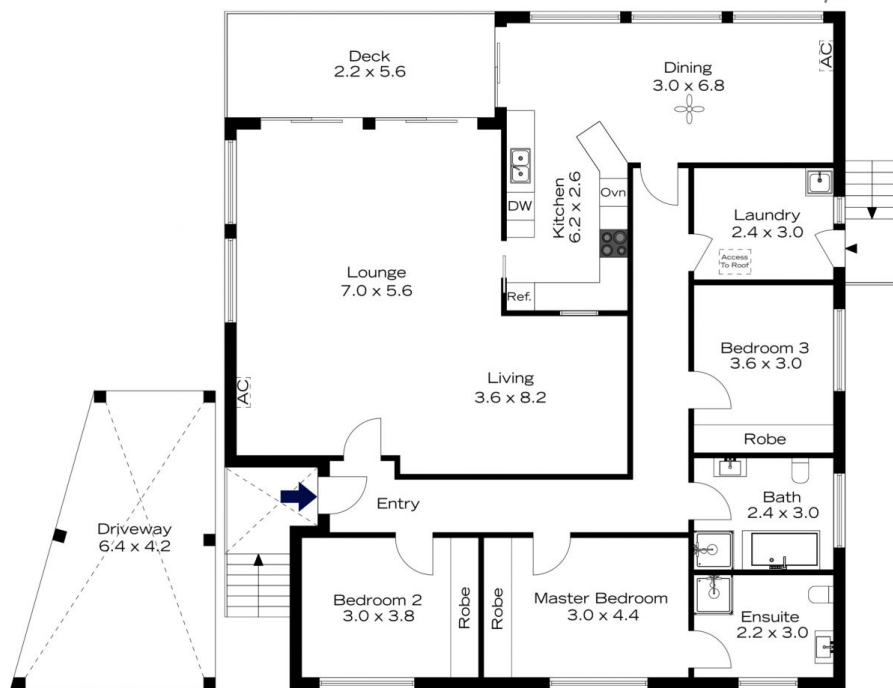
[For full version visit the website](https://www.chapmanrealestate.com.au)

Type : House
Price : \$1,390,000 - \$1,450,000
Land Size : 1006 sqm
View : <https://www.chapmanrealestate.com.au/sale/nsw/blue-mountains-surrounds/glenbrook/residential/house/8075227>



Sharon Lampert
02 4739 4311

29B BROOK ROAD, GLENBROOK



INTERNAL
159 m²

EXTERNAL
18 m²

TOTAL
177 m²



The floor plan is not to scale; measurements are indicative and in metres. Exterior elements are not in position. Plans should not be relied on. Interested parties should make and rely on their own enquiries.

29B BROOK ROAD, GLENBROOK



INTERNAL
159 m²

EXTERNAL
18 m²

TOTAL
177 m²



The floor plan is not to scale; measurements are indicative and in metres. All features included in this 3D plan are for inspiration purposes only. This is not an exact replica of the property or the position of exterior elements. Plans should not be relied on. Interested parties should make and rely on their own enquiries.