



11 Moore Road Springwood NSW

3 1 1

LOCATION - Set on a desirable R2 zoned corner block in one of Springwood's most charming streets. The location is unbeatable, being close to transport and within walking distance to town, schools, the golf course, and parks.

STYLE - This beautifully maintained single-level mountains cottage boasts a classic design with a tile roof and cypress pine cladding, positioned perfectly on a corner, flat block.

LAYOUT - 3 bedrooms, huge primary with built in, and an additional built-in/robe in a second bedroom, large living area, expansive kitchen/dining area, updated bathroom with separate shower and bath, separate toilet, internal laundry with toilet, all sitting on a great sized block with two distinct outdoor areas.

FEATURES - Large bright living area features reverse

Price : \$ 955,000
Land Size : 689.2 sqm
View : <https://www.chapmanrealestate.com.au/sale/nsw/hawkesbury/springwood/residential/homeuse/8049488>

<https://www.chapmanrealestate.com.au>

11 MOORE ROAD, SPRINGWOOD



INTERNAL
123 m²

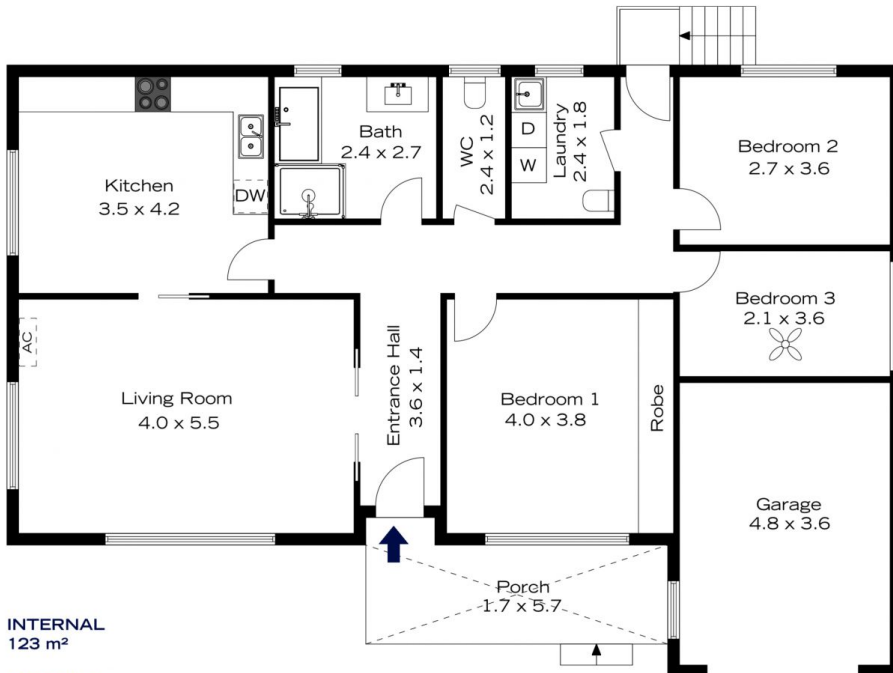
EXTERNAL
10 m²

TOTAL
133 m²



The floor plan is not to scale; measurements are indicative and in metres. All features included in this 3D plan are for inspiration purposes only. This is not an exact replica of the property or the position of exterior elements. Plans should not be relied on. Interested parties should make and rely on their own enquiries.

11 MOORE ROAD, SPRINGWOOD



INTERNAL
123 m²

EXTERNAL
10 m²

TOTAL
133 m²



The floor plan is not to scale; measurements are indicative and in metres. Exterior elements are not in position. Plans should not be relied on. Interested parties should make and rely on their own enquiries.