



28 Bednal Road Springwood NSW

4 3 2

LOCATION: Conveniently located in Springwood, easy access to public transport, shops, and schools. Situated in a peaceful location, it provides plenty of privacy from neighbours.

STYLE: A large two-story brick and tile family home set on a great usable block of land, with plenty of scope for improvement.

LAYOUT: 3 living areas, 4 bedrooms, 3 bathrooms. Upstairs provides 3 bedrooms, the large primary bedroom has a walk in robe and large ensuite, plus a main bathroom. Downstairs provides a bedroom, bathroom, separate toilet, 3 living areas, good sized kitchen/dining, internal laundry with a covered outdoor paved area and a

Type : House
Price : \$ 1,100,000
Land Size : 1113 sqm
View : <https://www.chapmanrealestate.com.au/sale/nsw/hawkesbury/springwood/residential/house/8047673>

[For full version visit the website](https://www.chapmanrealestate.com.au)

<https://www.chapmanrealestate.com.au>

28 BEDNAL ROAD, SPRINGWOOD



Ground Floor

INTERNAL
197 m²

EXTERNAL
40 m²

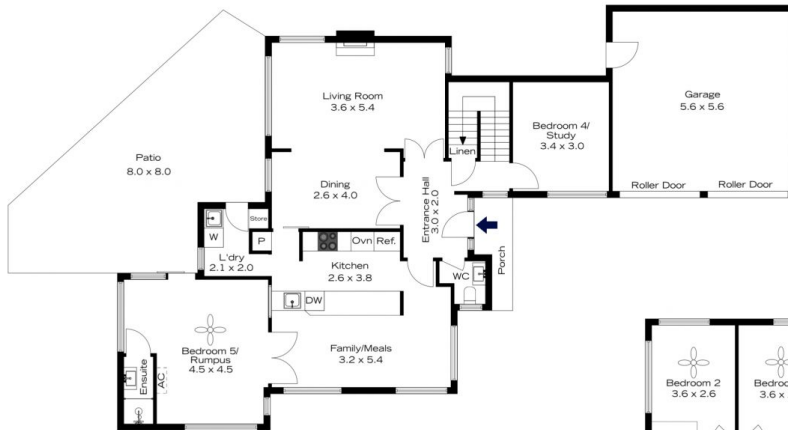
TOTAL
237 m²



First Floor

The floor plan is not to scale; measurements are indicative and in metres. All features included in this 3D plan are for inspiration purposes only. This is not an exact replica of the property or the position of exterior elements. Plans should not be relied on. Interested parties should make and rely on their own enquiries.

28 BEDNAL ROAD, SPRINGWOOD



Ground Floor

INTERNAL
197 m²

EXTERNAL
40 m²

TOTAL
237 m²



First Floor

The floor plan is not to scale; measurements are indicative and in metres. Exterior elements are not in position. Plans should not be relied on. Interested parties should make and rely on their own enquiries.