



3/9-11 Wascoe Street Leura NSW

3 2 2

LOCATION: Scenic setting less than 400m to Leura Mall. Stroll to the many popular eateries, specialty shops, supermarket, bus and rail services.

STYLE: Beautifully maintained and extremely low maintenance, dual level townhouse of rendered brick with Colorbond roof. Offering a sense of warmth and calm through out, inviting you to soak in the fresh air and tree filled views - a picturesque sight year round.

LAYOUT: Master bedroom with ensuite, laundry, kitchen, living and dining are conveniently located on the entry level, ascend to the second level to discover 2 bedrooms with balcony access and main bathroom. 2 bathrooms overall.

FEATURES: Stylishly renovated, open design kitchen with gas cook top, excellent storage, ample bench space,

Type : Townhouse
Price : \$ 890,000
Land Size : 282 sqm
View : <https://www.chapmanrealestate.com.au/sale/nsw/blue-mountains-surrounds/leura/residential/townhouse/8042107>

[For full version visit the website](#)

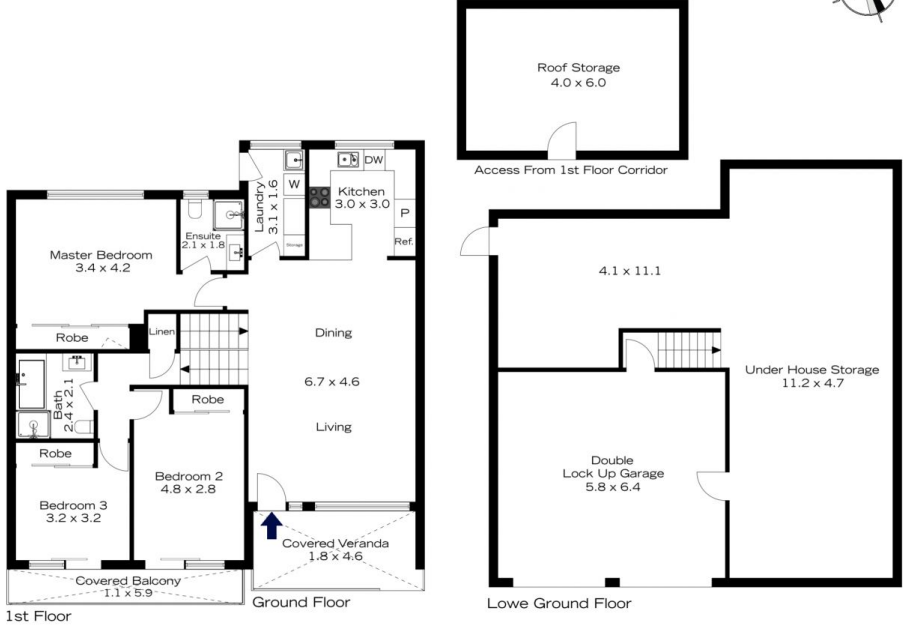


Tennille Haddock
02 4739 4311



Sharon Lampert
02 4739 4311

3/9-11 WASCOE STREET, LEURA



INTERNAL
232 m²

EXTERNAL
17 m²

TOTAL
249 m²



The floor plan is not to scale; measurements are indicative and in metres. Exterior elements are not in position. Plans should not be relied on. Interested parties should make and rely on their own enquiries.

3/9-11 WASCOE STREET, LEURA



INTERNAL
232 m²

EXTERNAL
17 m²

TOTAL
249 m²



The floor plan is not to scale; measurements are indicative and in metres. All features included in this 3D plan are for inspiration purposes only. This is not an exact replica of the property or the position of exterior elements. Plans should not be relied on. Interested parties should make and rely on their own enquiries.