



2/92-110 Lalor Drive Springwood NSW

2 1

LOCATION - Ideally located in a peaceful & community-minded location, this 2 bedroom over 55's villa is close to a bus stop with Springwood CBD only 3.4km (approx.) away offering an abundance of cafes, shopping, restaurants, sports club & Springwood railway station.

STYLE - Renovated, single level double brick construction and tile villa with stunning bush outlook & private rear garden/courtyard.

LAYOUT - Light filled with fresh interiors, generous open plan living/dining, kitchen overlooking the rear garden, 2 generous bedrooms, renovated main family bathroom, internal laundry with direct external access, double carport.

Type : Villa
Price : \$ 680,000
Land Size : 164 sqm
View : <https://www.chapmanrealestate.com.au/sale/nsw/hawkesbury/springwood/residential/villa/8036183>

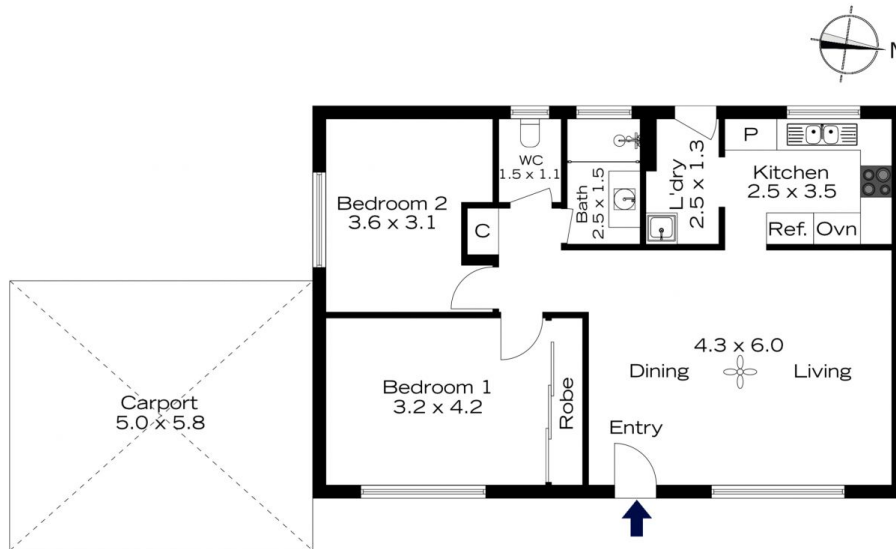


Sarah Watson
02 4739 4311

[For full version visit the website](https://www.chapmanrealestate.com.au)

<https://www.chapmanrealestate.com.au>

2/92-110 LALOR DRIVE, SPRINGWOOD



INTERNAL
76 m²

EXTERNAL
30 m²

TOTAL
106 m²



The floor plan is not to scale; measurements are indicative and in metres. Exterior elements are not in position. Plans should not be relied on. Interested parties should make and rely on their own enquiries.

2/92-110 LALOR DRIVE, SPRINGWOOD



INTERNAL
76 m²

EXTERNAL
30 m²

TOTAL
106 m²



The floor plan is not to scale; measurements are indicative and in metres. All features included in this 3D plan are for inspiration purposes only. This is not an exact replica of the property or the position of exterior elements. Plans should not be relied on. Interested parties should make and rely on their own enquiries.