



## 20 Heather Glen Road Yellow Rock NSW

4 2 3

**LOCATION** - Situated in a quiet cul de sac on a very popular high end street, within 3.7km to vibrant Winmalee Village, local schools, bush walks and 400m to closest bus stop.

**STYLE** - Only circa 10 year old character filled single level brick home with colour bond roof positioned perfectly on 1391 m2 landscaped block, it has been flawlessly constructed showcasing calm, comfortable, classy and easy lifestyle.

**LAYOUT** - Two separate living spaces, open plan kitchen/lounge/ dining room and separate lounge room, 4 bedrooms, master with large walk in robe and ensuite with double basin, 2 other rooms with built in robes, large

**Type** : House  
**Price** : \$ 1,565,000  
**Land Size** : 1391 sqm  
**View** : <https://www.chapmanrealestate.com.au/sale/nsw/hawkesbury/yellow-rock/residential/house/8030592>

[For full version visit the website](https://www.chapmanrealestate.com.au)

<https://www.chapmanrealestate.com.au>

# 20 HEATHER GLEN ROAD, YELLOW ROCK



**INTERNAL**  
209 m<sup>2</sup>

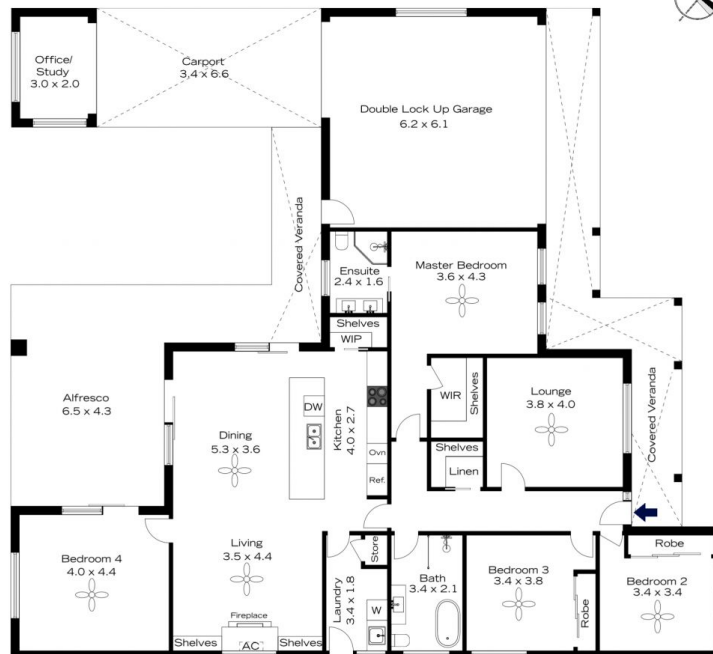
**EXTERNAL**  
94 m<sup>2</sup>

**TOTAL**  
303 m<sup>2</sup>



The floor plan is not to scale; measurements are indicative and in metres. All features included in this 3D plan are for inspiration purposes only. This is not an exact replica of the property or the position of exterior elements. Plans should not be relied on. Interested parties should make and rely on their own enquiries.

# 20 HEATHER GLEN ROAD, YELLOW ROCK



**INTERNAL**  
209 m<sup>2</sup>

**EXTERNAL**  
94 m<sup>2</sup>

**TOTAL**  
303 m<sup>2</sup>



The floor plan is not to scale; measurements are indicative and in metres. Exterior elements are not in position. Plans should not be relied on. Interested parties should make and rely on their own enquiries.