



#### 44 Grose Road Faulconbridge NSW

3 1

**LOCATION** - Positioned on a large block of approximately 1567m<sup>2</sup>, within 500m to both the primary and high school, convenient to local shops, sports & aquatic centre, within 1.8km to station and recently upgraded Buttenshaw Park.

**STYLE** - Renovated single level brick home with tile roof, delightful street appeal and elevated bush outlook to the rear.

**LAYOUT** - Light and bright open living & dining area, three bedrooms, master with built in robes, renovated main bathroom, separate toilet and laundry with convenient external access.

**FEATURES** - Modern kitchen with timber bench tops, feature tile splash back, neutral cabinetry and stainless steel appliances, split system reverse cycle AC, lovely front gardens, enclosed and secure fully fenced rear yard with

**Type** : House  
**Price** : \$ 900,000  
**Land Size** : 1567 sqm  
**View** : <https://www.chapmanrealestate.com.au/sale/nsw/hawkesbury/faulconbridge/residential/house/8016402>

[For full version visit the website](https://www.chapmanrealestate.com.au)

<https://www.chapmanrealestate.com.au>



# 44 GROSE ROAD, FAULCONBRIDGE



**INTERNAL**  
83 m<sup>2</sup>

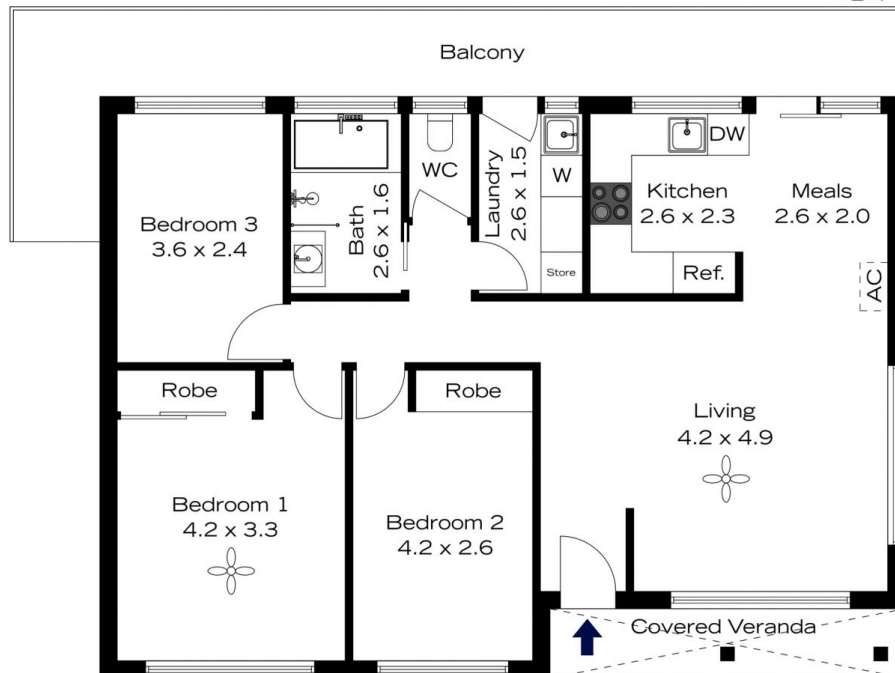
**EXTERNAL**  
25 m<sup>2</sup>

**TOTAL**  
108 m<sup>2</sup>



The floor plan is not to scale; measurements are indicative and in metres. All features included in this 3D plan are for inspiration purposes only. This is not an exact replica of the property or the position of exterior elements. Plans should not be relied on. Interested parties should make and rely on their own enquiries.

# 44 GROSE ROAD, FAULCONBRIDGE



**INTERNAL**  
83 m<sup>2</sup>

**EXTERNAL**  
25 m<sup>2</sup>

**TOTAL**  
108 m<sup>2</sup>



The floor plan is not to scale; measurements are indicative and in metres. Exterior elements are not in position. Plans should not be relied on. Interested parties should make and rely on their own enquiries.