



7 Bourke Street BLAXLAND NSW

2 1 1

LOCATION - Positioned in a fabulously central but quiet location within approx. 600m to walk to the Blaxland shopping village and public transport options and 700m to the local primary school. Access to the Highway for travel both up and down the mountain is simple and with local amenities and the High School all within approx. 2.5km of this property it suits a myriad of situations.

STYLE - Magnificent block of near level land with a two bedroom older style fibro home, ready for your big ideas.

LAYOUT - Central lounge room with 2 large bedrooms adjacent, bathroom and kitchen both lead off the living area and through the kitchen is access to the Queensland-style room at rear proving access to the laundry with secondary

Type	: House
Price	: \$ 855,000
Land Size	: 996 sqm
View	: https://www.chapmanrealestate.com.au/sale/nsw/blue-mountains-surrounds/blaxland/residential/house/8016266

[For full version visit the website](https://www.chapmanrealestate.com.au)

<https://www.chapmanrealestate.com.au>

7 BOURKE STREET, BLAXLAND



INTERNAL
83 m²

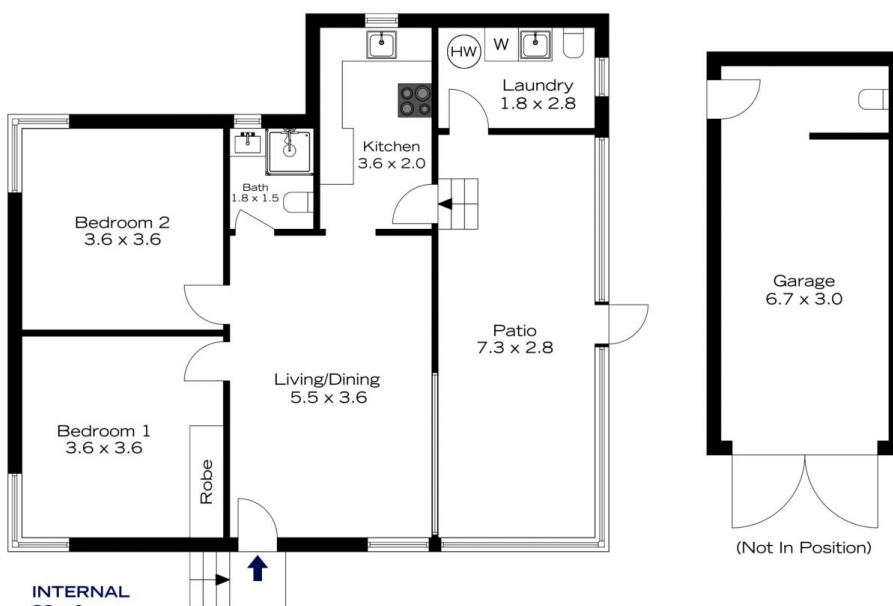
EXTERNAL
1 m²

TOTAL
84 m²



The floor plan is not to scale; measurements are indicative and in metres. All features included in this 3D plan are for inspiration purposes only. This is not an exact replica of the property or the position of exterior elements. Plans should not be relied on. Interested parties should make and rely on their own enquiries.

7 BOURKE STREET, BLAXLAND



INTERNAL
83 m²

EXTERNAL
1 m²

TOTAL
84 m²



The floor plan is not to scale; measurements are indicative and in metres. Exterior elements are not in position. Plans should not be relied on. Interested parties should make and rely on their own enquiries.