



68 Chapman Parade Faulconbridge NSW

4 2 3

LOCATION - Beautifully positioned in a sought after Faulconbridge pocket with a peaceful bush outlook, bus stop metres away, within walking distance to both local high school (500m) and primary school (1.3km), 2.9km to train, easy access to highway, close to bush walks and moments to famous Norman Lindsay Gallery.

STYLE - Single level rendered brick home with tile roof and side vehicle access to double lock up garage. Stunning swimming pool with superb bush views, all set beautifully on a large 1201m² block with an impressive street appeal.

LAYOUT - Two separate living areas, main family lounge room with feature light and gorgeous corner window, which flows flawlessly into stunning open kitchen, dining and family room, four bedrooms, two with built in robes, master with ensuite and walk in robe, well maintained family

Type : House
Price : \$ 1,150,000
Land Size : 1201 sqm
View : <https://www.chapmanrealestate.com.au/sale/nsw/hawkesbury/faulconbridge/residential/house/7983231>

[For full version visit the website](#)

<https://www.chapmanrealestate.com.au>

68 CHAPMAN PARADE, FAULCONBRIDGE



INTERNAL
137 m²

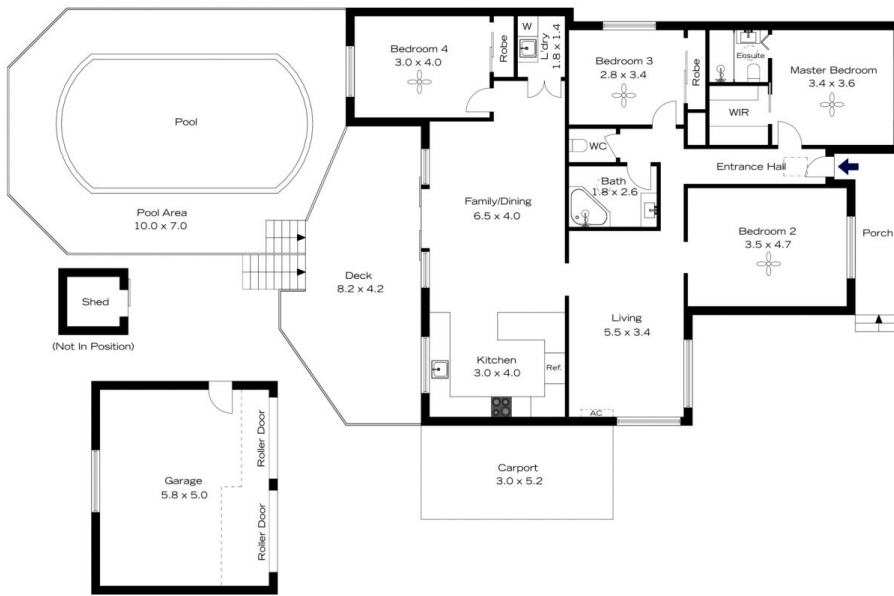
EXTERNAL
52 m²

TOTAL
189 m²



The floor plan is not to scale; measurements are indicative and in metres. All features included in this 3D plan are for inspiration purposes only. This is not an exact replica of the property or the position of exterior elements. Plans should not be relied on. Interested parties should make and rely on their own enquiries.

68 CHAPMAN PARADE, FAULCONBRIDGE



INTERNAL
137 m²

EXTERNAL
52 m²

TOTAL
189 m²



The floor plan is not to scale; measurements are indicative and in metres. Exterior elements are not in position. Plans should not be relied on. Interested parties should make and rely on their own enquiries.