



## 195 Explorers Road Lapstone NSW

5 3 1

**LOCATION:** Ultra convenient location. Leave the car at home and walk to rail (approximately a 4 min walk) for an easy and direct commute to Penrith, Parramatta and Sydney CBD.

Situated at the base of the Blue Mountains in the highly coveted and tightly held suburb of Lapstone, adjoining Explorers Reserve - enjoy the natural beauty of the bushland and creek running down to the Nepean River.

**STYLE:** 2 story double brick and clad family home offering rare multi generational living. Or, live upstairs and separately rent out downstairs.

**LAYOUT:** Fostering spacious interiors, the entry is comprised of 3 bedrooms w/ built in robes (ensuite to

[For full version visit the website](https://www.chapmanrealestate.com.au)

**Type** : House  
**Price** : \$ 1,230,000  
**Land Size** : 784.1 sqm  
**View** : <https://www.chapmanrealestate.com.au/sale/nsw/blue-mountains-surrounds/lapstone/residential/house/7955377>

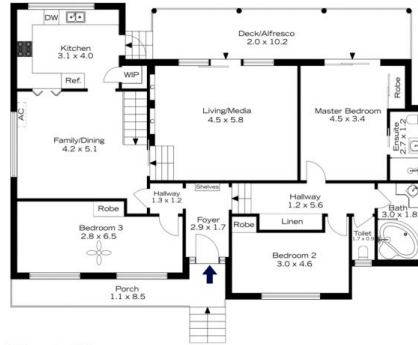


**Tennille Haddock**  
02 4739 4311

195 EXPLORERS ROAD, LAPSTONE



Ground Floor



First Floor

**INTERNAL**  
273 m<sup>2</sup>

**EXTERNAL**  
57 m<sup>2</sup>

**TOTAL**  
330 m<sup>2</sup>



The floor plan is not to scale; measurements are indicative and in metres. Exterior elements are not in position. Plans should not be relied on. Interested parties should make and rely on their own enquiries.

195 EXPLORERS ROAD, LAPSTONE



Ground Floor



First Floor

**INTERNAL**  
273 m<sup>2</sup>

**EXTERNAL**  
57 m<sup>2</sup>

**TOTAL**  
330 m<sup>2</sup>



The floor plan is not to scale; measurements are indicative and in metres. All features included in this 3D plan are for inspiration purposes only. This is not an exact replica of the property or the position of exterior elements. Plans should not be relied on. Interested parties should make and rely on their own enquiries.