



10 Buena Vista Road Winmalee NSW

4 1 1

LOCATION - Superb street appeal in a quiet and family friendly pocket of Winmalee, privately set behind a picket fence, with a mainly level entry from the street and elevated bush outlook to the rear, conveniently within 3km of multiple local schools, parks, bush walks, golf course, medical centre and Winmalee Shopping Village.

STYLE - Renovated mostly single level brick home (partial split level to parents retreat) with tile roof, elevated rear bush outlook with immaculate landscaping front and back utilising all sections of the generous approx. 1467m2 block.

LAYOUT - Two separate living spaces, the first a generous size light filled family room flowing through to open plan kitchen and dining/meals area with direct access to undercover rear entertaining deck, 4 bedrooms in total, three bedrooms on entry level (all with built in robes) and

Type : House
Price : \$ 1,070,000
Land Size : 1467 sqm
View : <https://www.chapmanrealestate.com.au/sale/nsw/hawkesbury/winmalee/residential/house/7954057>



Helen Harris
02 4751 8266



Hannah Cubby
02 4751 8266

[For full version visit the website](https://www.chapmanrealestate.com.au)

<https://www.chapmanrealestate.com.au>

10 BUENA VISTA ROAD, WINMALEE



INTERNAL
123 m²

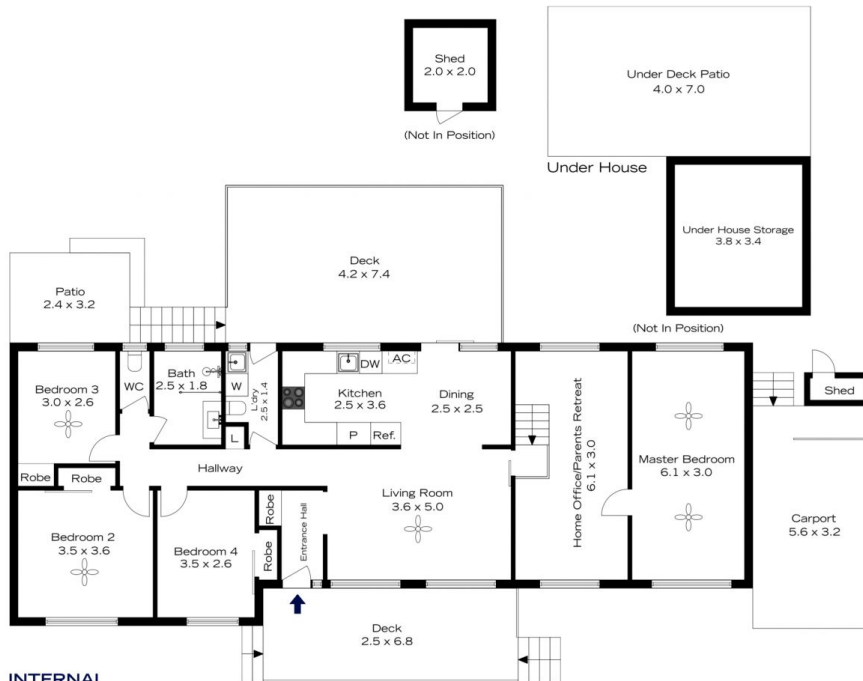
EXTERNAL
75 m²

TOTAL
198 m²



The floor plan is not to scale; measurements are indicative and in metres. All features included in this 3D plan are for inspiration purposes only. This is not an exact replica of the property or the position of exterior elements. Plans should not be relied on. Interested parties should make and rely on their own enquiries.

10 BUENA VISTA ROAD, WINMALEE



INTERNAL
123 m²

EXTERNAL
75 m²

TOTAL
198 m²



The floor plan is not to scale; measurements are indicative and in metres. Exterior elements are not in position. Plans should not be relied on. Interested parties should make and rely on their own enquiries.