



### 1 Churchill Place Springwood NSW

4 3 2

**LOCATION** - Conveniently set on a low maintenance block with R2 zoning, across the road of newly updated Buttenshaw Park, Springwood Aquatic & Fitness Centre with easy access to highway and less than 2km to the cafe's, shops, services and rail at highly popular Springwood village.

**STYLE** - Circa 1969, elevated mainly single level brick home with tile roof, with remarkably well maintained original interior, boasting front and rear verandahs which each provide direct access downstairs to double lock up garage with laundry and third bathroom, all set on an easy living block of approx. 834.7 m2.

**LAYOUT** - North facing sun drenched lounge room flowing through to dining then into open kitchen & family meals area, four bedrooms, three with built in robes, master with

**Type** : House  
**Price** : \$ 1,080,000  
**Land Size** : 834.7 sqm  
**View** : <https://www.chapmanrealestate.com.au/sale/nsw/hawkesbury/springwood/residential/house/7933732>

[For full version visit the website](https://www.chapmanrealestate.com.au)

<https://www.chapmanrealestate.com.au>

# 1 CHURCHILL PLACE, SPRINGWOOD



Upper Ground Floor



Lower Ground Floor



**INTERNAL**  
177 m<sup>2</sup>

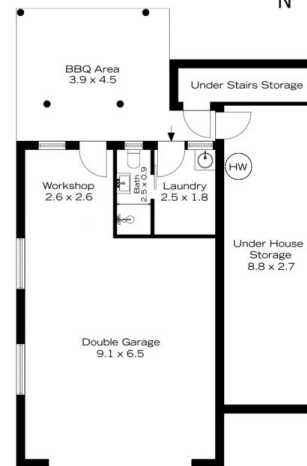
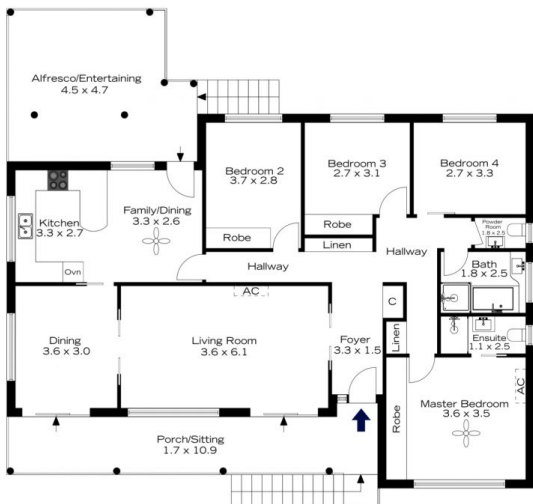
**EXTERNAL**  
61 m<sup>2</sup>

**TOTAL**  
238 m<sup>2</sup>



The floor plan is not to scale; measurements are indicative and in metres. All features included in this 3D plan are for inspiration purposes only. This is not an exact replica of the property or the position of exterior elements. Plans should not be relied on. Interested parties should make and rely on their own enquiries.

# 1 CHURCHILL PLACE, SPRINGWOOD



Lower Ground Floor



**INTERNAL**  
177 m<sup>2</sup>

**EXTERNAL**  
61 m<sup>2</sup>

**TOTAL**  
238 m<sup>2</sup>



The floor plan is not to scale; measurements are indicative and in metres. Exterior elements are not in position. Plans should not be relied on. Interested parties should make and rely on their own enquiries.