



### 8A Hughes Avenue Lawson NSW

4 2 2

**LOCATION** - This stunning new residence is located in a highly convenient location in the upper Blue Mountains. Positioned only 500m from Lawson railway station, and 1 minutes' drive to access the Great Western Highway, commuting from this designer home is as simple as can be. The local primary school is only five minutes from home, and multiple secondary school options are available within the area including prestigious private school, Blue Mountains Grammar School. Lush green walking trails are all within a few moments' drive, and some of the Blue Mountains most scenic spots including waterfalls are all only moments away.

**STYLE** - This beautifully designed family home was built in 2023, and has country charm inside and out. It offers a rare

**Type** : House  
**Price** : \$ 1,400,000  
**Land Size** : 925.96 sqm  
**View** : <https://www.chapmanrealestate.com.au/sale/nsw/blue-mountains-surrounds/lawson/residential/house/7924424>

[For full version visit the website](#)

<https://www.chapmanrealestate.com.au>

# 8A HUGHES AVENUE LAWSON, LAWSON



**INTERNAL**  
252 m<sup>2</sup>

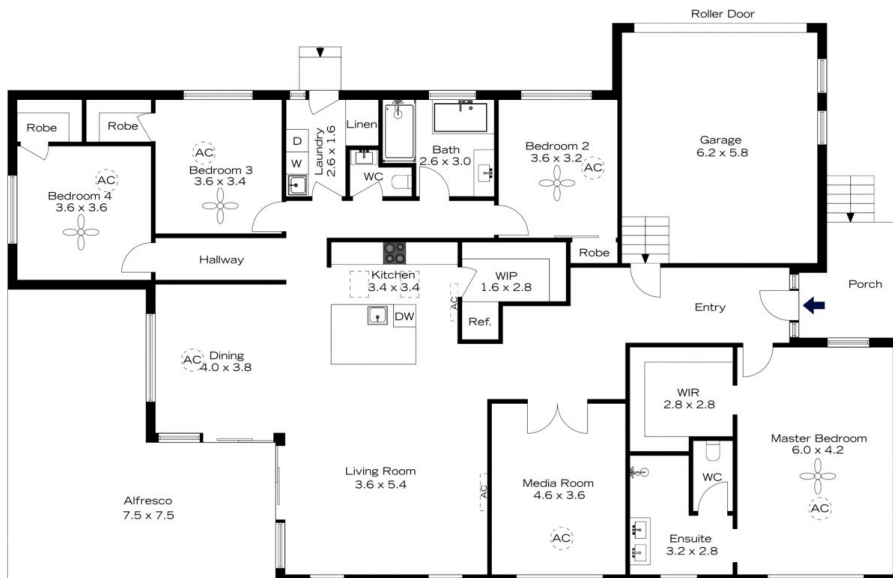
**EXTERNAL**  
50 m<sup>2</sup>

**TOTAL**  
302 m<sup>2</sup>



The floor plan is not to scale; measurements are indicative and in metres. All features included in this 3D plan are for inspiration purposes only. This is not an exact replica of the property or the position of exterior elements. Plans should not be relied on. Interested parties should make and rely on their own enquiries.

# 8A HUGHES AVENUE LAWSON, LAWSON



**INTERNAL**  
252 m<sup>2</sup>

**EXTERNAL**  
50 m<sup>2</sup>

**TOTAL**  
302 m<sup>2</sup>



The floor plan is not to scale; measurements are indicative and in metres. Exterior elements are not in position. Plans should not be relied on. Interested parties should make and rely on their own enquiries.