



17 Meredith Street Blaxland NSW

2 1 1

LOCATION - Situated less than 2km from Blaxland Rail and Blaxland Village shops, 11min mostly flat walk (according to Google) to nearest public bus stop and within 450m to St John's Oval and local gymnasium.

STYLE - Charming 1970's brick, bungalow style home with tile roof, positioned on an 862.7sqm block.

Gaze straight into the valley from the comfort of your living room, deck or kitchen, surrounded by the serenity and calmness of the bush, fresh air and sun sets. A truly picturesque property that must be seen to be appreciated.

LAYOUT - Open living, galley kitchen, 2 bedrooms - master with built in robe, bathroom with shower over bath, separate toilet, laundry adjacent to garage.

FEATURES - Modern kitchen with built - in meals area and ample bench & storage space, air conditioning, wood

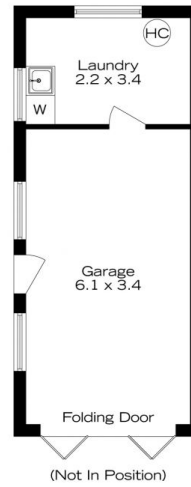
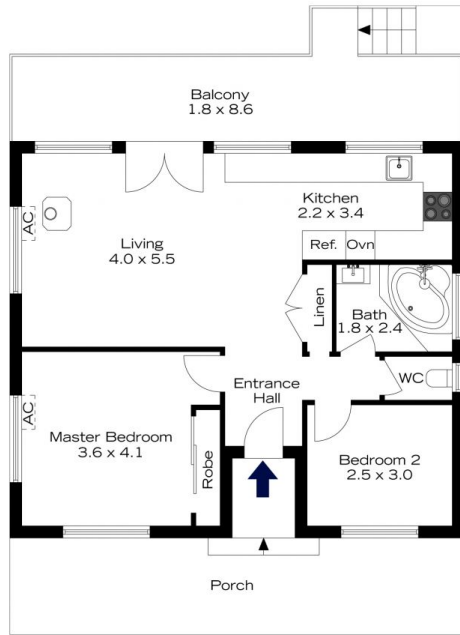
Type : House
Price : \$ 985,000
Land Size : 862.7 sqm
View : <https://www.chapmanrealestate.com.au/sale/nsw/blue-mountains-surrounds/blaxland/residential/house/7916675>



Tennille Haddock
02 4739 4311

[For full version visit the website](https://www.chapmanrealestate.com.au)

17 MEREDITH STREET, BLAXLAND



INTERNAL
75 m²
EXTERNAL
39 m²
TOTAL
114 m²



The floor plan is not to scale; measurements are indicative and in metres. Exterior elements are not in position. Plans should not be relied on. Interested parties should make and rely on their own enquiries.

17 MEREDITH STREET, BLAXLAND



INTERNAL
75 m²
EXTERNAL
39 m²
TOTAL
114 m²



The floor plan is not to scale; measurements are indicative and in metres. All features included in this 3D plan are for inspiration purposes only. This is not an exact replica of the property or the position of exterior elements. Plans should not be relied on. Interested parties should make and rely on their own enquiries.