



44 Wattlecliffe Drive Blaxland NSW

5 2 2

LOCATION - Perfectly positioned in a hidden pocket of Blaxland, this home is convenient to the Blaxland Shopping Village, local cafes, daycare, schools and all the Blue Mountains have to offer.

STYLE - 2 storey brick & tile home located in the popular Wattlecliffe Estate, situated on a low maintenance 644 m2 block (approx.)

LAYOUT - Five bedrooms, four with built-in robes and the master with large built-in robe and ensuite, great size three way family bathroom and extra powder room downstairs. Open plan kitchen & dining with separate lounge area.

FEATURES - This home has so much to offer! The modern

[For full version visit the website](https://www.chapmanrealestate.com.au/sale/nsw/blue-mountains-surrounds/blaxland/residential/house/7908324)

Type : House
Price : \$ 1,227,000
Land Size : 644 sqm
View : <https://www.chapmanrealestate.com.au/sale/nsw/blue-mountains-surrounds/blaxland/residential/house/7908324>



Kate Spence
02 4739 6200



Sharon Lampert
02 4739 4311

44 WATTLECLIFFE DRIVE, BLAXLAND



Ground Floor

INTERNAL
205 m²

EXTERNAL
51 m²

TOTAL
256 m²



The floor plan is not to scale; measurements are indicative and in metres. All features included in this 3D plan are for inspiration purposes only. This is not an exact replica of the property or the position of exterior elements. Plans should not be relied on. Interested parties should make and rely on their own enquiries.



First Floor

44 WATTLECLIFFE DRIVE, BLAXLAND



Ground Floor

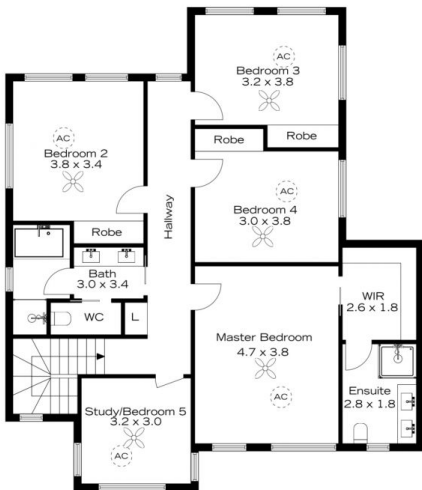
INTERNAL
205 m²

EXTERNAL
51 m²

TOTAL
256 m²



The floor plan is not to scale; measurements are indicative and in metres. Exterior elements are not in position. Plans should not be relied on. Interested parties should make and rely on their own enquiries.



First Floor