



30-32 Kent Street Bullaburra NSW

4 2 2

Location:

Situated in the charming town of Bullaburra within the picturesque Blue Mountains, this property is nestled in a tranquil setting. Enjoy the peaceful surroundings and the convenience of a private, bushy outlook on a spacious 2006m² half-acre, level block.

Type

: House

Price

: \$ 1,120,000

Land Size

: 2006 sqm

View

: <https://www.chapmanrealestate.com.au/sale/nsw/blue-mountains-surrounds/bullaburra/residential/house/7907334>

Style:

This property boasts a large 4-bedroom ranch-style home that captures the essence of comfort and style. With a double garage, ensuite, built in wardrobes, combined kitchen, dining and family room, and slow combustion heating, it offers a perfect blend of modern amenities and classic ranch charm. The color bond roof adds durability and a touch of contemporary style to the exterior. Inside,

[For full version visit the website](https://www.chapmanrealestate.com.au)

<https://www.chapmanrealestate.com.au>

30-32 KENT STREET, BULLABURRA



INTERNAL
202 m²

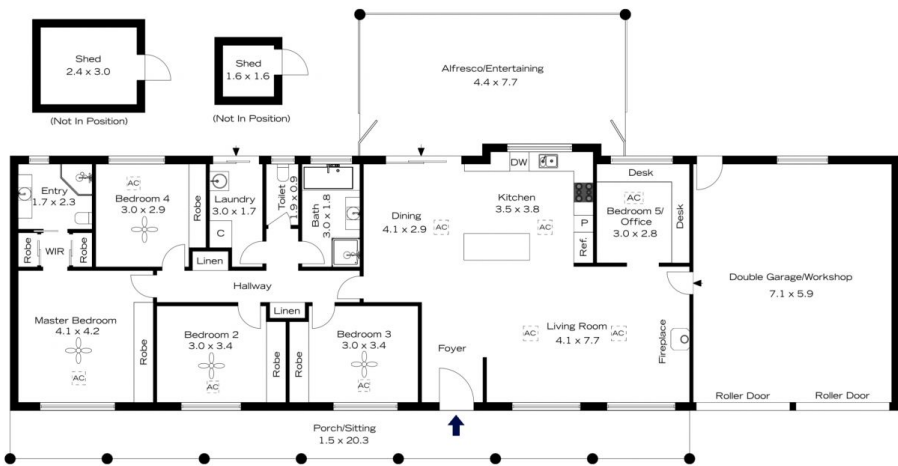
EXTERNAL
66 m²

TOTAL
268 m²



The floor plan is not to scale; measurements are indicative and in metres. All features included in this 3D plan are for inspiration purposes only. This is not an exact replica of the property or the position of exterior elements. Plans should not be relied on. Interested parties should make and rely on their own enquiries.

30-32 KENT STREET, BULLABURRA



INTERNAL
202 m²

EXTERNAL
66 m²

TOTAL
268 m²



The floor plan is not to scale; measurements are indicative and in metres. Exterior elements are not in position. Plans should not be relied on. Interested parties should make and rely on their own enquiries.