



29/92-110 Lalor Drive Springwood NSW

2 1 1

LOCATION - Nestled proudly in a peaceful location, this 2 bedroom renovated Over 55s villa is in close proximity to bush walks and nature trails. Public transport is easily accessible with a bus stop only 130m from your front door. Springwood CBD is only 3.4km away offering boutique shops, cafes, restaurants, sports club and Springwood railway station.

Type : Villa
Price : \$ 725,000
View : <https://www.chapmanrealestate.com.au/sale/nsw/hawkesbury/springwood/residential/villa/7906474>

STYLE - Downsizing to something low maintenance has never been more appealing. This renovated, freshly painted single level living brick and tile roof strata villa features a fully landscaped courtyard to the rear, and sits up on an elevated position, taking in lots of natural light.

LAYOUT - To enjoy it's elevated viewpoint, there is a small

[For full version visit the website](#)

29/92-110 LALOR DRIVE, SPRINGWOOD



INTERNAL
87 m²

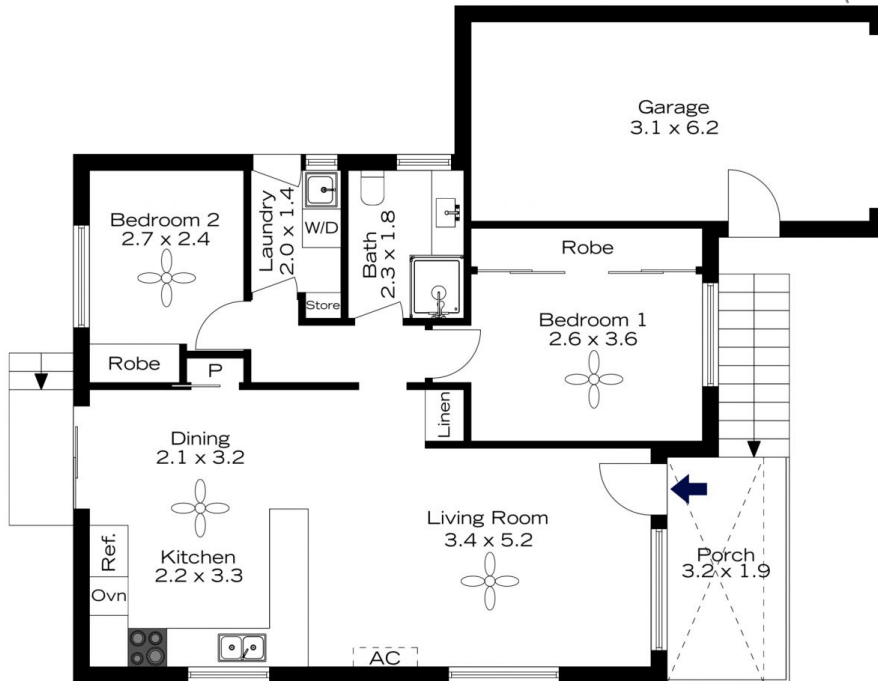
EXTERNAL
9 m²

TOTAL
96 m²



The floor plan is not to scale; measurements are indicative and in metres. All features included in this 3D plan are for inspiration purposes only. This is not an exact replica of the property or the position of exterior elements. Plans should not be relied on. Interested parties should make and rely on their own enquiries.

29/92-110 LALOR DRIVE, SPRINGWOOD



INTERNAL
87 m²

EXTERNAL
9 m²

TOTAL
96 m²



The floor plan is not to scale; measurements are indicative and in metres. Exterior elements are not in position. Plans should not be relied on. Interested parties should make and rely on their own enquiries.