



24 Plateau Road Springwood NSW

5 4 5

LOCATION - Tranquility and privacy found at the end of an established hedge lined driveway, on a generous 3275m² block with R2 zoning, directly across the road from Springwood Aquatic & Fitness Centre along with the entrance to recently upgraded Buttenshaw Park. The epitome of convenience with a bus stop at the end of the driveway and within 1.6km of both local primary & high schools, short walk to restaurants and within 2km to the cafes, services, shopping precinct & train station in highly sought after Springwood village.

STYLE - Immaculately maintained, recently updated, North facing architecturally designed Eco house with granny flat, of circa 1980s double brick construction with Colorbond roof, boasting open plan, mainly single level living, with

Type : House
Price : \$ 2,150,000
Land Size : 3275 sqm
View : <https://www.chapmanrealestate.com.au/sale/nsw/hawkesbury/springwood/residential/house/7906456>

[For full version visit the website](https://www.chapmanrealestate.com.au)

<https://www.chapmanrealestate.com.au>

24 PLATEAU ROAD, SPRINGWOOD



INTERNAL
326 m²

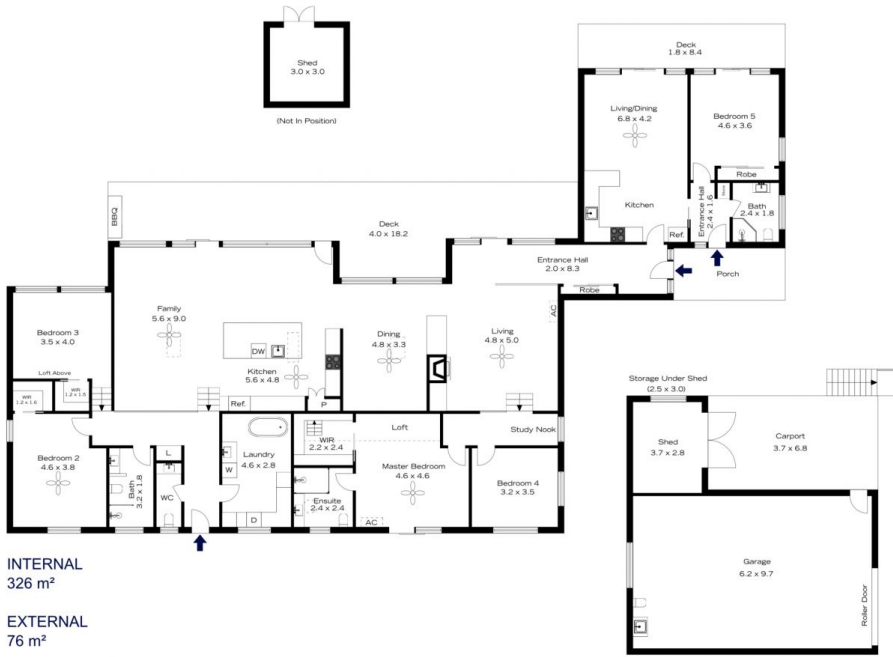
EXTERNAL
76 m²

TOTAL
402 m²



The floor plan is not to scale; measurements are indicative and in metres. All features included in this 3D plan are for inspiration purposes only. This is not an exact replica of the property or the position of exterior elements. Plans should not be relied on. Interested parties should make and rely on their own enquiries.

24 PLATEAU ROAD, SPRINGWOOD



INTERNAL
326 m²

EXTERNAL
76 m²

TOTAL
402 m²



The floor plan is not to scale; measurements are indicative and in metres. Exterior elements are not in position. Plans should not be relied on. Interested parties should make and rely on their own enquiries.