



### 155b Chapman Parade Faulconbridge NSW

4 3 4

**LOCATION** - Privately positioned in highly coveted Faulconbridge pocket with an exquisite and mainly un-interrupted bush outlook, within 2.2km to both local high & primary schools, 3.8km to train, easy access to highway and convenience of popular Springwood village, close to bush walks and a mere 230m from the top of the drive to famous Norman Lindsay Gallery.

**Type** : House  
**Price** : \$ 1,750,000  
**Land Size** : 5311 sqm  
**View** : <https://www.chapmanrealestate.com.au/sale/nsw/hawkesbury/faulconbridge/residential/house/7906454>

**STYLE** - Beautifully presented mainly single level brick home with colorbond roof on spectacular approx. 5311m2 serene bush block, ideally positioned to maximise the stunning northerly aspect.

**LAYOUT** - Striking entrance down private driveway through remote access gates, passing the impressive triple lock up

[For full version visit the website](#)

<https://www.chapmanrealestate.com.au>



# 155B CHAPMAN PARADE, FAULCONBRIDGE



Ground Floor

Lower Ground Floor

**INTERNAL**  
201 m<sup>2</sup>

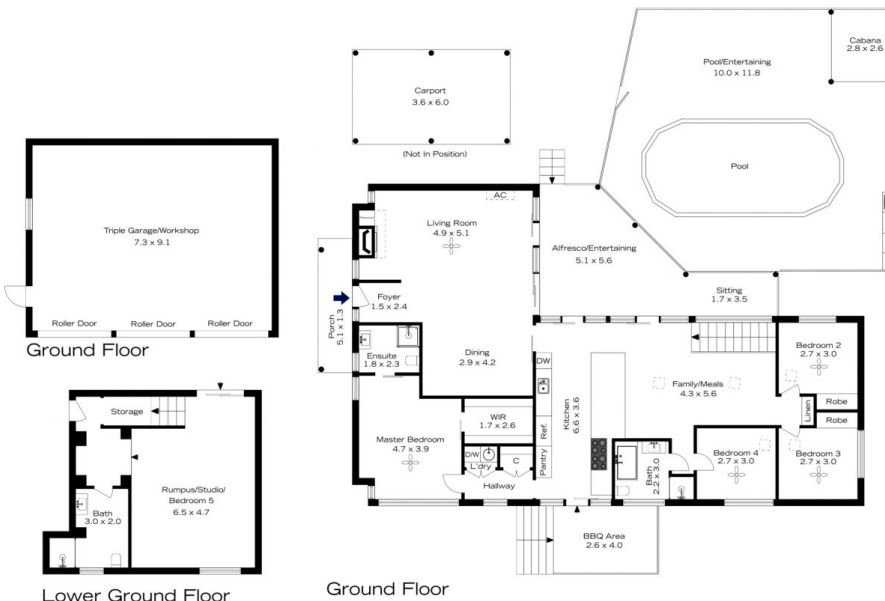
**EXTERNAL**  
124 m<sup>2</sup>

**TOTAL**  
325 m<sup>2</sup>



The floor plan is not to scale; measurements are indicative and in metres. All features included in this 3D plan are for inspiration purposes only. This is not an exact replica of the property or the position of exterior elements. Plans should not be relied on. Interested parties should make and rely on their own enquiries.

# 155B CHAPMAN PARADE, FAULCONBRIDGE



Ground Floor

Lower Ground Floor

Ground Floor

**INTERNAL**  
201 m<sup>2</sup>

**EXTERNAL**  
124 m<sup>2</sup>

**TOTAL**  
325 m<sup>2</sup>



The floor plan is not to scale; measurements are indicative and in metres. Exterior elements are not in position. Plans should not be relied on. Interested parties should make and rely on their own enquiries.