



33 Summer Road Faulconbridge NSW

4 2 2

LOCATION - A commanding presence on one of the most popular streets in Faulconbridge, within 400m of local high school, within 1.1km to primary school, and less than 3.5km to either Faulconbridge or Springwood train stations, stunning bush walks around the corner, easy access to highway and the convenience of popular Springwood village shops, restaurants and cafes just a short drive away.

STYLE - Multi level home of mainly brick construction with tile roof set on a generous approx. 1002m² block with beautiful bush outlook and northerly aspect to the rear.

LAYOUT - Three living spaces including oversize family room opening up onto the rear deck (pull out dividing wall

Type : House
Price : \$ 1,240,000
Land Size : 1002 sqm
View : <https://www.chapmanrealestate.com.au/sale/nsw/hawkesbury/faulconbridge/residential/house/7906450>

[For full version visit the website](#)

<https://www.chapmanrealestate.com.au>

33 SUMMER ROAD, FAULCONBRIDGE



Ground Floor

INTERNAL
221 m²

EXTERNAL
30 m²

TOTAL
251 m²

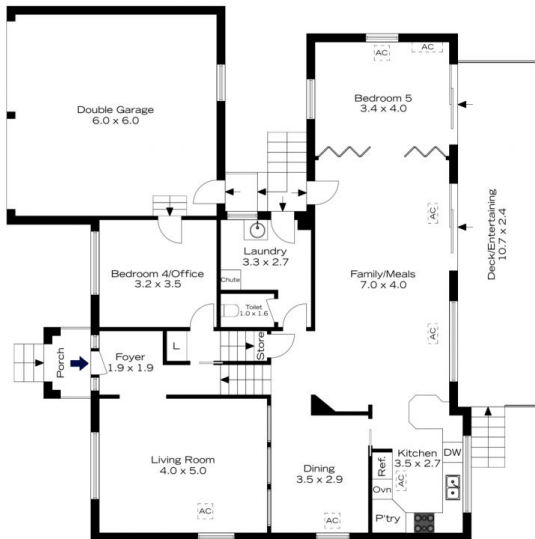


The floor plan is not to scale; measurements are indicative and in metres. All features included in this 3D plan are for inspiration purposes only. This is not an exact replica of the property or the position of exterior elements. Plans should not be relied on. Interested parties should make and rely on their own enquiries.



First Floor

33 SUMMER ROAD, FAULCONBRIDGE



Ground Floor

INTERNAL
221 m²

EXTERNAL
30 m²

TOTAL
251 m²



The floor plan is not to scale; measurements are indicative and in metres. Exterior elements are not in position. Plans should not be relied on. Interested parties should make and rely on their own enquiries.



First Floor