



25 Park Road Springwood NSW

4 2 1

LOCATION - Serene southside location in proximity to Springwood Village (within 2km), strolling distance to school & bus stop.

STYLE - Charming two-story clad cottage style residence with contemporary enhancements situated on a sprawling 1669m² plot.

LAYOUT - Three distinct and spacious living areas, four well-proportioned bedrooms all featuring built-in wardrobes, master bedroom with ensuite, modern-designed bathrooms, main bathroom equipped with underfloor heating, open concept kitchen/dining/living space, study nook, internal laundry, abundant off-street parking.

Type : House
Price : \$ 1,180,000
Land Size : 1669 sqm
View : <https://www.chapmanrealestate.com.au/sale/nsw/hawkesbury/springwood/residential/house/7906443>

[For full version visit the website](https://www.chapmanrealestate.com.au)

<https://www.chapmanrealestate.com.au>

25 PARK ROAD, SPRINGWOOD



Ground Floor

First Floor

INTERNAL
226 m²

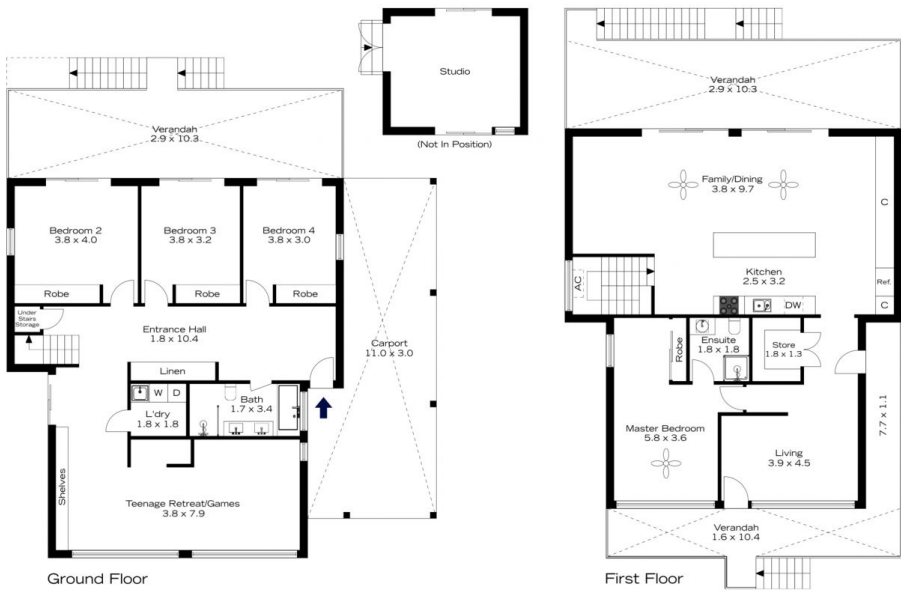
EXTERNAL
126 m²

TOTAL
352 m²



The floor plan is not to scale; measurements are indicative and in metres. All features included in this 3D plan are for inspiration purposes only. This is not an exact replica of the property or the position of exterior elements. Plans should not be relied on. Interested parties should make and rely on their own enquiries.

25 PARK ROAD, SPRINGWOOD



Ground Floor

First Floor

INTERNAL
226 m²

EXTERNAL
126 m²

TOTAL
352 m²



The floor plan is not to scale; measurements are indicative and in metres. Exterior elements are not in position. Plans should not be relied on. Interested parties should make and rely on their own enquiries.