



57 Ellison Road Springwood NSW

3 2 1

LOCATION - A short walk to popular Ellison Public School, convenient to bus, parks, bushwalks, golf club and approx 3km to Springwood Village.

STYLE - Single level home of rendered brick construction with tile roof.

LAYOUT - Comfortable lounge and dining room, three bedrooms with built ins to main, main bath and separate toilet.

FEATURES - Kitchen updated from original with dishwasher and gas cooking, polished timber floors, reverse cycle AC and gas heating, internal laundry, neat mostly level garden yard with storage shed. The studio is a garage conversion into 3 rooms and a bathroom, ideal for art studio or man cave, with great potential for inlaw accommodation (STCA), fully fenced with single carport.

Type : House
Price : \$ 995,000
Land Size : 752.5 sqm
View : <https://www.chapmanrealestate.com.au/sale/nsw/hawkesbury/springwood/residential/house/7906442>

[For full version visit the website](https://www.chapmanrealestate.com.au)

<https://www.chapmanrealestate.com.au>

57 ELLISON ROAD, SPRINGWOOD



INTERNAL
137 m²

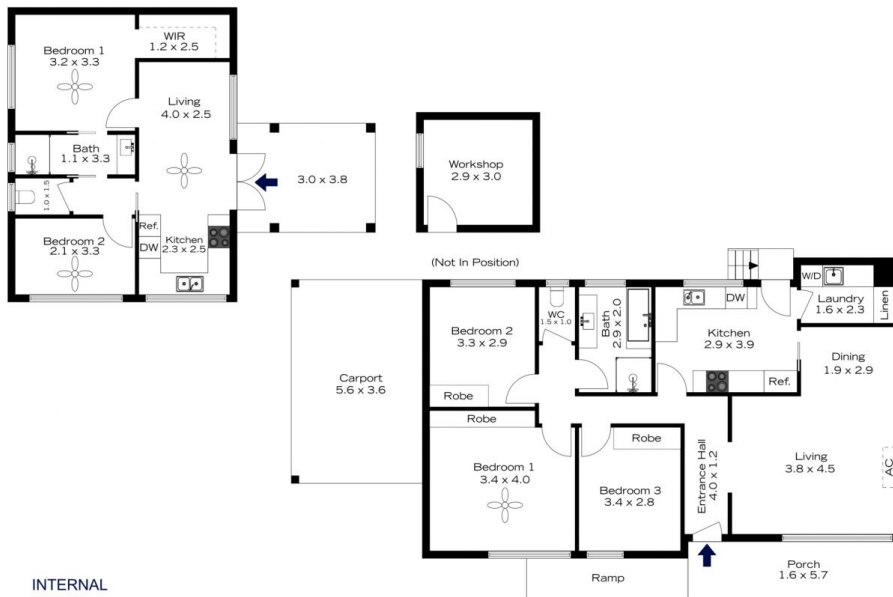
EXTERNAL
41 m²

TOTAL
178 m²



The floor plan is not to scale; measurements are indicative and in metres. All features included in this 3D plan are for inspiration purposes only. This is not an exact replica of the property or the position of exterior elements. Plans should not be relied on. Interested parties should make and rely on their own enquiries.

57 ELLISON ROAD, SPRINGWOOD



INTERNAL
137 m²

EXTERNAL
41 m²

TOTAL
178 m²



The floor plan is not to scale; measurements are indicative and in metres. Exterior elements are not in position. Plans should not be relied on. Interested parties should make and rely on their own enquiries.