



12 Orient Street Lawson NSW

4 2 2

LOCATION - Situated within moments from Lawson village offering a variety of cafés, bakery, restaurants and other specialty stores. With plenty of options for outdoor activities, Lawson offers a variety of walking tracks, aquatic centre and an off-leash dog park. A short 700m walk to Lawson primary school and only 450m to Lawson train station.

Type : House
Price : \$ 910,000
Land Size : 961.1 sqm
View : <https://www.chapmanrealestate.com.au/sale/nsw/blue-mountains-surrounds/lawson/residential/house/7906383>

STYLE: This single level brick and tile home offers charming character, surprising size and space. Nestled on a 961m2 block, fully fenced level block.

LAYOUT: Four good sized bedrooms, built ins, master with ensuite, large 3 way bathroom, great kitchen, formal living area, family room, internal laundry and a rear undercover

[For full version visit the website](#)

<https://www.chapmanrealestate.com.au>

12 ORIENT STREET, LAWSON



INTERNAL
132 m²

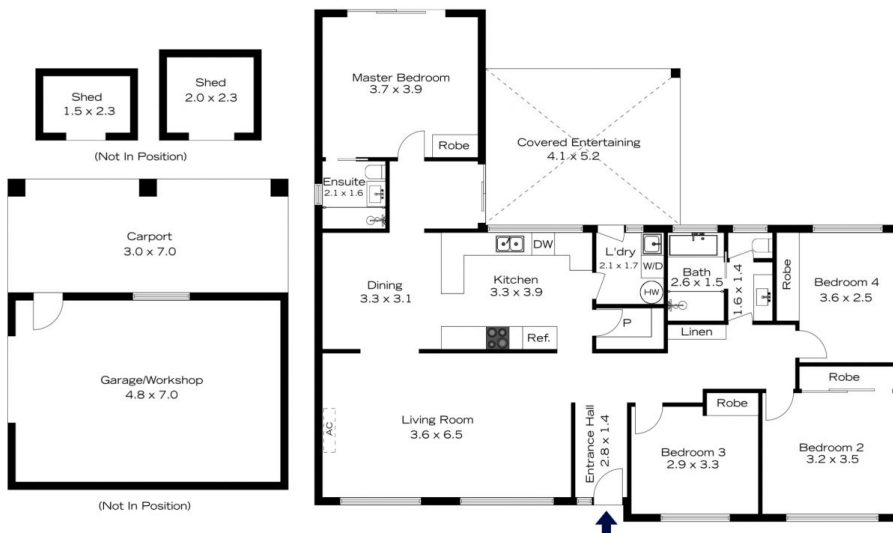
EXTERNAL
21 m²

TOTAL
153 m²



The floor plan is not to scale; measurements are indicative and in metres. All features included in this 3D plan are for inspiration purposes only. This is not an exact replica of the property or the position of exterior elements. Plans should not be relied on. Interested parties should make and rely on their own enquiries.

12 ORIENT STREET, LAWSON



INTERNAL
132 m²

EXTERNAL
21 m²

TOTAL
153 m²



The floor plan is not to scale; measurements are indicative and in metres. Exterior elements are not in position. Plans should not be relied on. Interested parties should make and rely on their own enquiries.