



Mount Riverview

4 2 2

LOCATION - Privately positioned in quiet, popular and leafy street. Offering convenient proximity to local supermarket, tennis courts, park, primary school and pre-school. Your evening walks will lead you to magical sunsets and iconic bushwalks.

STYLE - Single level, brick home and tile home with interiors and a quiet and calm feel throughout. Soak in distant westerly views and sunsets from the covered front porch or for the green thumb, enjoy the leafy, manicured grounds surrounding this home.

LAYOUT - Two separate living rooms, formal and informal meals area, spacious kitchen, 4 bedrooms with built in robes & ceiling fans, master with ensuite.

Type : House
Price : \$ 1,130,000
Land Size : 804 sqm
View : <https://www.chapmanrealestate.com.au/sale/nsw/hawkesbury/mount-riverview/residential/house/7906366>

[For full version visit the website](https://www.chapmanrealestate.com.au)

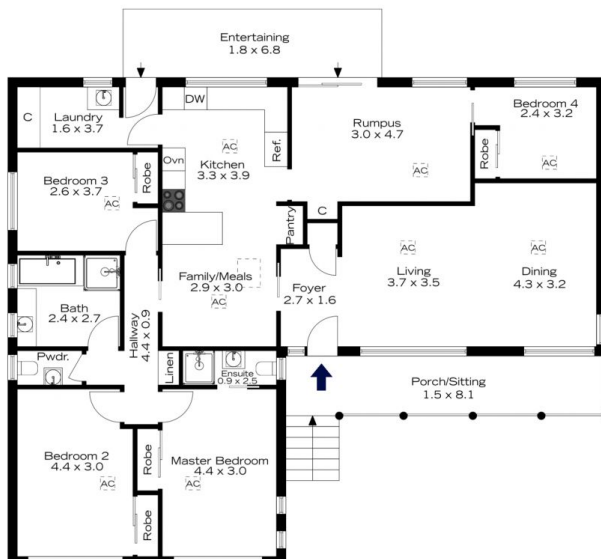
<https://www.chapmanrealestate.com.au>



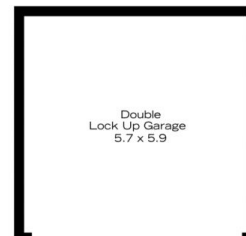
TOTAL
166 m²



The floor plan is not to scale; measurements are indicative and in metres. All features included in this 3D plan are for inspiration purposes only. This is not an exact replica of the property or the position of exterior elements. Plans should not be relied on. Interested parties should make and rely on their own enquiries.



(Not In Position)



(Not In Position)

TOTAL
166 m²



The floor plan is not to scale; measurements are indicative and in metres. Exterior elements are not in position. Plans should not be relied on. Interested parties should make and rely on their own enquiries.