



### 114 Rusden Road Mount Riverview NSW

2 1 1

**LOCATION** - Positioned in a highly sought after location, shops, parks, school, daycare and cafes are all within (approx) 1.3km distance. There is quick and easy access to public transport and local bush walks on your doorstep.

**STYLE** - Single level brick & tile home nestled on a completely flat R2 zoned 582m2 block (approx).

**LAYOUT:** Two bedrooms, two living areas, bright kitchen overlooking the lovingly maintained garden, family bathroom & laundry.

**FEATURES:** Generous kitchen with gas cooking, ample bench & storage space, dishwasher, split system reverse cycle air conditioning, light, bright and airy interiors, downlights, two bayonet gas outlets, slow combustion fireplace for those cooler winter days, sheds, gorgeous fully fenced back garden, single lock up garage, ample off street

**Type** : House  
**Price** : \$ 818,000  
**Land Size** : 582 sqm  
**View** : <https://www.chapmanrealestate.com.au/sale/nsw/hawkesbury/mount-riverview/residential/house/7899031>

[For full version visit the website](https://www.chapmanrealestate.com.au)



**Sarah Watson**  
02 4739 4311



**Sharon Lampert**  
02 4739 4311



114 RUSDEN ROAD, MOUNT RIVERVIEW



INTERNAL  
118 m<sup>2</sup>

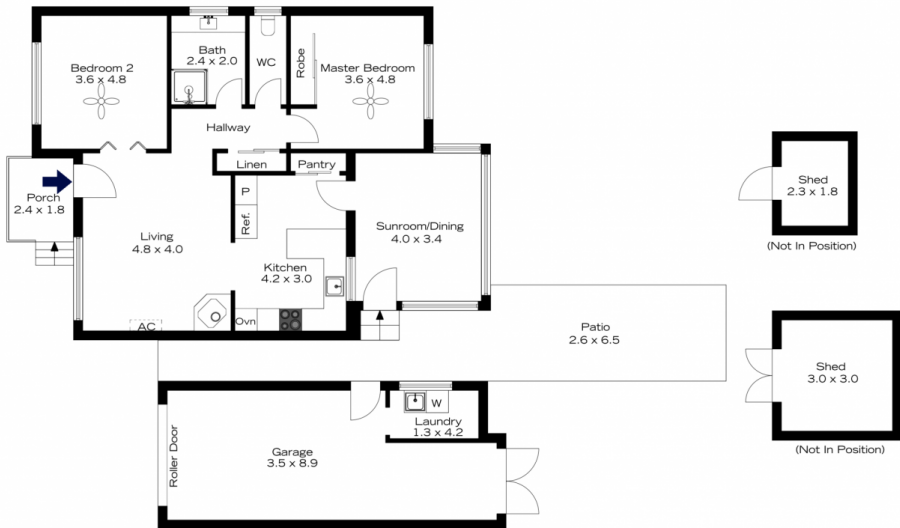
EXTERNAL  
33 m<sup>2</sup>

TOTAL  
151 m<sup>2</sup>



The floor plan is not to scale; measurements are indicative and in metres. All features included in this 3D plan are for inspiration purposes only. This is not an exact replica of the property or the position of exterior elements. Plans should not be relied on. Interested parties should make and rely on their own enquiries.

114 RUSDEN ROAD, MOUNT RIVERVIEW



INTERNAL  
118 m<sup>2</sup>

EXTERNAL  
33 m<sup>2</sup>

TOTAL  
151 m<sup>2</sup>



The floor plan is not to scale; measurements are indicative and in metres. Exterior elements are not in position. Plans should not be relied on. Interested parties should make and rely on their own enquiries.