



7 Lewis Street Lapstone NSW

3 1 1

LOCATION: - Ideally located on a tranquil street in one of the most highly desired pockets of Lapstone, this property is in close proximity to the national park, nature reserves, bike and walking tracks, netball courts, ovals, playground, Lapstone Public School and Preschool. It also has convenient access to the motorway, public buses and fast rail services to Penrith, Parramatta and the Sydney CBD.

STYLE: - On an almost flat block of approximately 803sqm, this lovely single level brick and tile home offers easy living and is offered to the market for the first time in well over 50 years. With a light filled layout, this property is perfect for a family, empty nesters, savvy investors, or for someone simply looking to get creative.

Type : House
Price : \$ 1,177,007
Land Size : 803 sqm
View : <https://www.chapmanrealestate.com.au/sale/nsw/blue-mountains-surrounds/lapstone/residential/house/7899025>

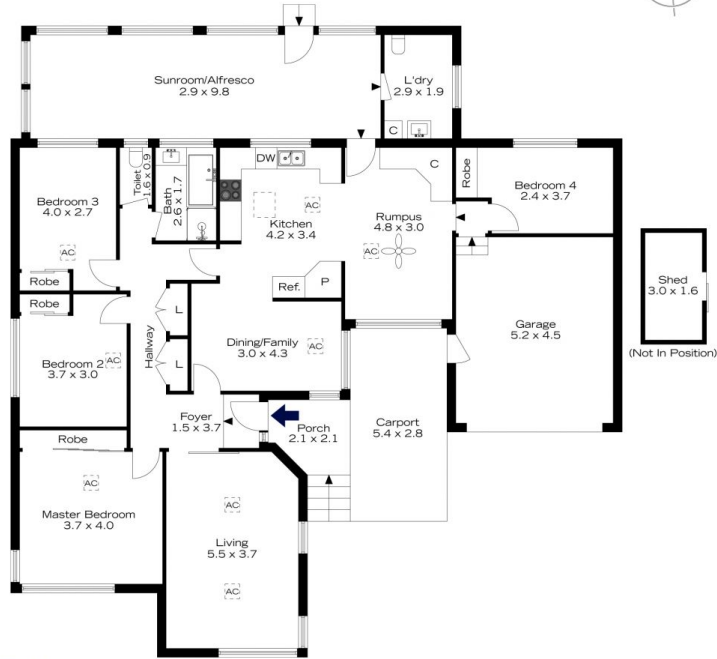
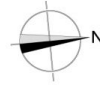


Sharon Lampert
02 4739 4311

[For full version visit the website](https://www.chapmanrealestate.com.au)

<https://www.chapmanrealestate.com.au>

7 LEWIS STREET, LAPSTONE



INTERNAL
213 m²
EXTERNAL
19 m²
TOTAL
232 m²



The floor plan is not to scale; measurements are indicative and in metres. Exterior elements are not in position. Plans should not be relied on. Interested parties should make and rely on their own enquiries.

7 LEWIS STREET, LAPSTONE



INTERNAL
213 m²
EXTERNAL
19 m²
TOTAL
232 m²



The floor plan is not to scale; measurements are indicative and in metres. All features included in this 3D plan are for inspiration purposes only. This is not an exact replica of the property or the position of exterior elements. Plans should not be relied on. Interested parties should make and rely on their own enquiries.