



82 Panorama Crescent Mount Riverview NSW

3 1 1

LOCATION - Located on the border of Blaxland and Mt Riverview, conveniently situated within 2km to Mt Riverview public School, local convenience store and Blaxland East shops. Expansive block of approx. 828sqm.

STYLE - Privately positioned, single level, rendered brick home with Colorbond roof. The large backyard offers a blank canvas for you to create your own garden.

LAYOUT - Open plan living, kitchen, dining with access to a private, covered side deck with built-in overhead heat lamp - perfect for year round use, 3 bedrooms (2 with built-in robes), bathroom.

FEATURES - Open galley style kitchen and dining,

[For full version visit the website](https://www.chapmanrealestate.com.au/sale/nsw/hawkesbury/mount-riverview/residential/house/7879227)

Type : House
Price : \$ 940,000
Land Size : 834.7 sqm
View : <https://www.chapmanrealestate.com.au/sale/nsw/hawkesbury/mount-riverview/residential/house/7879227>



Tennille Haddock
02 4739 4311



Milton Player
02 4739 4311

82 PANORAMA CRESCENT, MOUNT RIVERVIEW



INTERNAL
83 m²

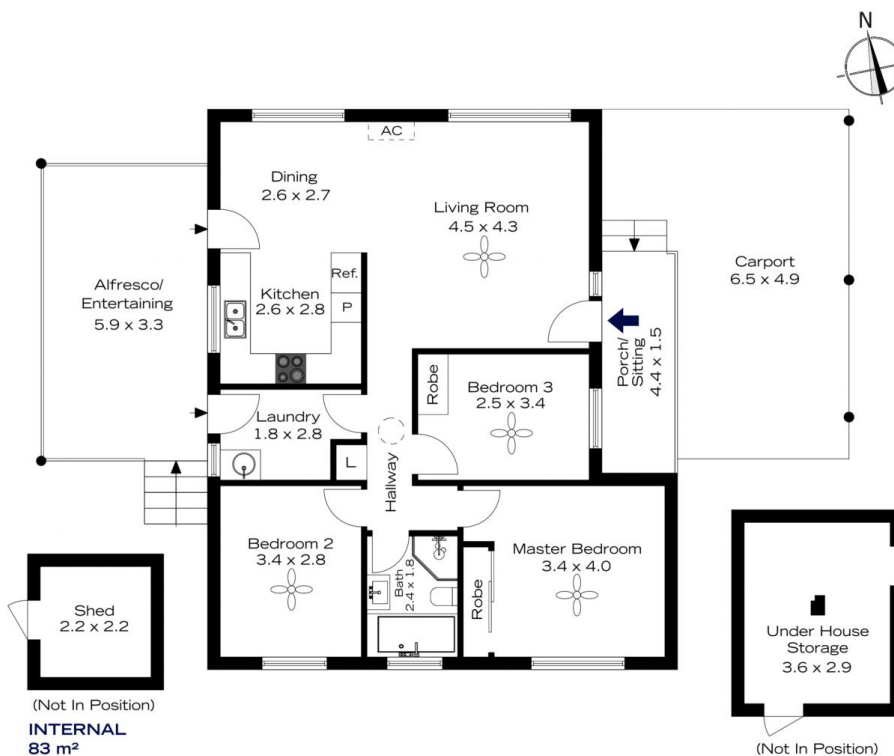
EXTERNAL
53 m²

TOTAL
136 m²



The floor plan is not to scale; measurements are indicative and in metres. All features included in this 3D plan are for inspiration purposes only. This is not an exact replica of the property or the position of exterior elements. Plans should not be relied on. Interested parties should make and rely on their own enquiries.

82 PANORAMA CRESCENT, MOUNT RIVERVIEW



(Not In Position)

INTERNAL
83 m²

EXTERNAL
53 m²

TOTAL
136 m²



The floor plan is not to scale; measurements are indicative and in metres. Exterior elements are not in position. Plans should not be relied on. Interested parties should make and rely on their own enquiries.