



## 56 Cliff Drive Katoomba NSW

2 1 1

**LOCATION** - Positioned on the high side of the street in an extremely sought after location on Cliff drive this 2-bedroom single level home enjoys a peaceful setting yet is still close to the iconic Three Sisters and Echo point. Katoomba town with all its shops, cafes & restaurants, local schools, parks, rail & world class Blue Mountains bushwalks are all within 1.4km.

**STYLE** - This well-presented much-loved weatherboard home benefits from a single lock up garage all set on a generous 911m2 (approx.) block. Oozing with charm and character this home has beautiful high ceilings with ornate cornice and large picture windows throughout. Accommodating 2 generous bedrooms, 1 bathroom with separate toilet, hallway, kitchen, living/dining plus conservatory, study nook, laundry, additional toilet and single lock up garage.

**LAYOUT** - Walk up the pathway to the large, covered

**Price** : \$ 910,000

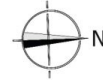
**Land Size** : 911 sqm

**View** : <https://www.chapmanrealestate.com.au/sale/nsw/blue-mountains-surrounds/katoomba/residential/house/7872839>



**Hayley Clifton**  
02 4782 5045

56 CLIFF DRIVE, KATOOMBA



INTERNAL  
173 m<sup>2</sup>

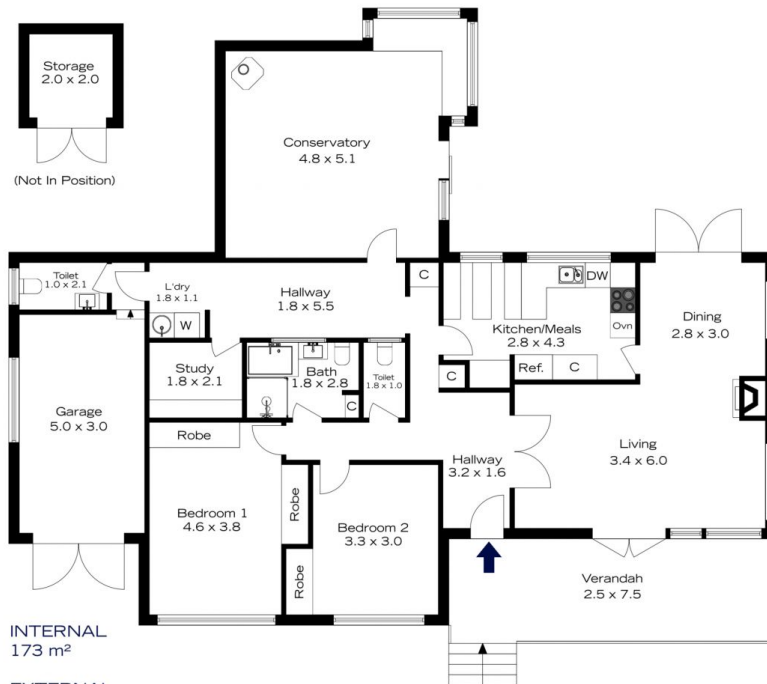
EXTERNAL  
20 m<sup>2</sup>

TOTAL  
193 m<sup>2</sup>



The floor plan is not to scale; measurements are indicative and in metres. All features included in this 3D plan are for inspiration purposes only. This is not an exact replica of the property or the position of exterior elements. Plans should not be relied on. Interested parties should make and rely on their own enquiries.

56 CLIFF DRIVE, KATOOMBA



INTERNAL  
173 m<sup>2</sup>

EXTERNAL  
20 m<sup>2</sup>

TOTAL  
193 m<sup>2</sup>



The floor plan is not to scale; measurements are indicative and in metres. Exterior elements are not in position. Plans should not be relied on. Interested parties should make and rely on their own enquiries.