



### 62 Yellow Rock Road Yellow Rock NSW

3 1 1

**LOCATION** - Peacefully located in a family friendly suburb with a gorgeous leafy backdrop and Yellow Rock Lookout a stones throw away from your doorstep. Winmalee Shopping Village, amenities and a choice of schools are within 7.2km and with a bus stop conveniently close across the road, this home represents a quiet and relaxed lifestyle.

**STYLE** - A comfortable single level, brick built and tile roof home with a large, level backyard and double gate side access.

**LAYOUT** - The charm begins with a slate tiled front verandah, warmly welcoming you to "Kookaburra Cottage?". As you come in to the entry hall the light filled open plan lounge and dining space leads to the kitchen that overlooks

[For full version visit the website](https://www.chapmanrealestate.com.au)

**Type** : House  
**Price** : \$ 800,000  
**Land Size** : 891 sqm  
**View** : <https://www.chapmanrealestate.com.au/sale/nsw/hawkesbury/yellow-rock/residential/home/7872166>



**Chris Rayner**  
02 4739 6200



# 62 YELLOW ROCK ROAD, YELLOW ROCK



**INTERNAL**  
113 m<sup>2</sup>

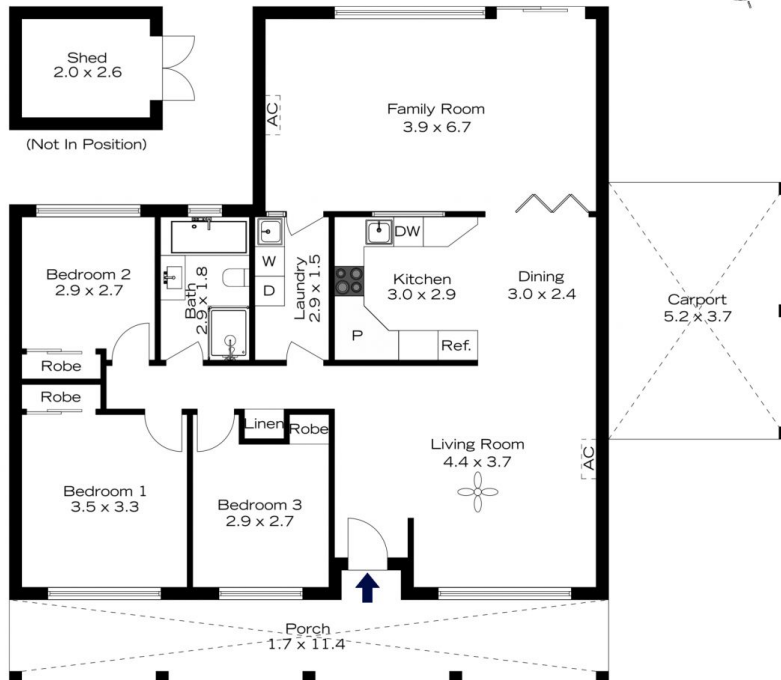
**EXTERNAL**  
41 m<sup>2</sup>

**TOTAL**  
154 m<sup>2</sup>



The floor plan is not to scale; measurements are indicative and in metres. All features included in this 3D plan are for inspiration purposes only. This is not an exact replica of the property or the position of exterior elements. Plans should not be relied on. Interested parties should make and rely on their own enquiries.

# 62 YELLOW ROCK ROAD, YELLOW ROCK



**INTERNAL**  
113 m<sup>2</sup>

**EXTERNAL**  
41 m<sup>2</sup>

**TOTAL**  
154 m<sup>2</sup>



The floor plan is not to scale; measurements are indicative and in metres. Exterior elements are not in position. Plans should not be relied on. Interested parties should make and rely on their own enquiries.