



### 73 Chapman Parade Faulconbridge NSW

4 2 1

**LOCATION** - This fantastic property is situated in a highly sought after pocket of the Blue Mountains. Public Schools are located nearby, and the Norman Lindsay Gallery is one of your closest neighbours. Surrounded by quality homes & bushland - you will enjoy the opportunity to explore scenic bush walks, and listen to the call of the native birds in the nearby tree canopies. Faulconbridge station is approx. 2.8km and access to the Great Western Highway is only 4 minutes away by car. Springwood CBD is less than 10 minutes by car, offering shops, cafes, pubs, clubs and more.

**STYLE** - A fresh & bright brick veneer and tile home with single carport. Recent upgrades have been completed inside to make this a modern & comfortable home, situated

[For full version visit the website](https://www.chapmanrealestate.com.au)

**Type** : House  
**Price** : \$ 970,000  
**Land Size** : 784 sqm  
**View** : <https://www.chapmanrealestate.com.au/sale/nsw/hawkesbury/faulconbridge/residential/house/7850502>



**Kate Spence**  
02 4739 6200



**Claudia Hayes**  
02 4751 8266



# 73 CHAPMAN PARADE, FAULCONBRIDGE



INTERNAL  
144 m<sup>2</sup>

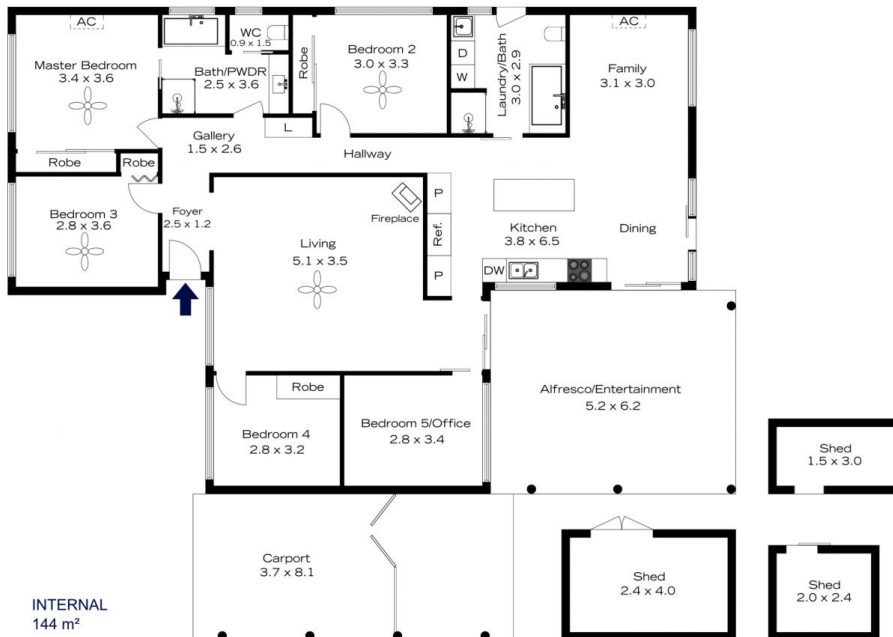
EXTERNAL  
68 m<sup>2</sup>

TOTAL  
212 m<sup>2</sup>



The floor plan is not to scale; measurements are indicative and in metres. All features included in this 3D plan are for inspiration purposes only. This is not an exact replica of the property or the position of exterior elements. Plans should not be relied on. Interested parties should make and rely on their own enquiries.

# 73 CHAPMAN PARADE, FAULCONBRIDGE



INTERNAL  
144 m<sup>2</sup>

EXTERNAL  
68 m<sup>2</sup>

TOTAL  
212 m<sup>2</sup>



The floor plan is not to scale; measurements are indicative and in metres. Exterior elements are not in position. Plans should not be relied on. Interested parties should make and rely on their own enquiries.