



14 Lewin Street Blaxland NSW

4 🛏 2 🚿 1 🚗

LOCATION - Set on an impressive approx 1075 sq m sizable allotment. Close to bush walks, shops, bus and local public school.

STYLE - Enticing two storey brick and tile home enjoying distant bush views, luscious vistas, exquisite sunsets and a relaxed ambiance of privacy and bliss.

LAYOUT - 2 living rooms, 4 bedrooms (4th could be used as teenage retreat or in-law style accom (with kitchenette and ensuite). 2 bathrooms with renovated main.

FEATURES - Attractive open plan, Kitchen with high end Miele appliances.

Freshly painted with new carpet, gleaming polished timber floorboards reverse cycle air conditioning, high raked ceilings, light filled modern living spaces, ceiling fans, covered rear deck overlooking the views, large, useable

Type : House
Price : \$ 1,100,000
Land Size : 1075 sqm
View : <https://www.chapmanrealestate.com.au/sale/nsw/blue-mountains-surrounds/blaxland/residential/house/7840264>

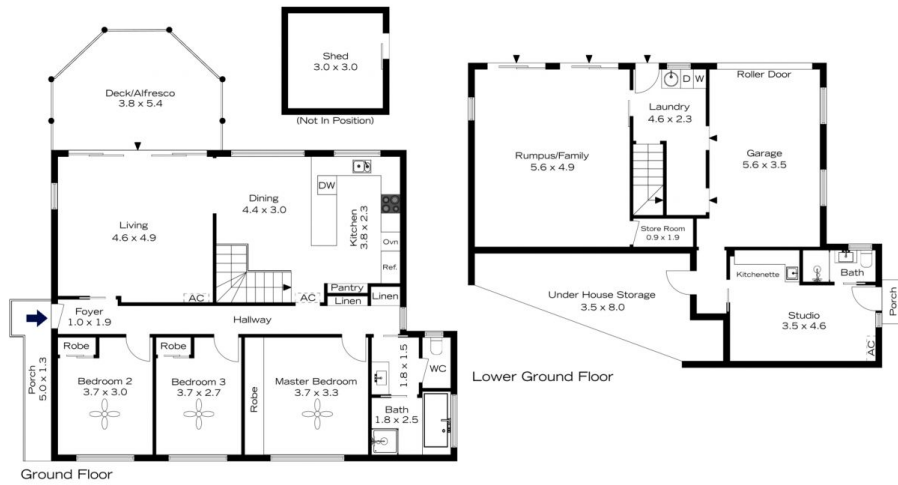


Milton Player
02 4739 4311

[For full version visit the website](https://www.chapmanrealestate.com.au)

<https://www.chapmanrealestate.com.au>

14 LEWIN STREET, BLAXLAND



INTERNAL
222 m²

EXTERNAL
24 m²

TOTAL
246 m²



The floor plan is not to scale; measurements are indicative and in metres. Exterior elements are not in position. Plans should not be relied on. Interested parties should make and rely on their own enquiries.

14 LEWIN STREET, BLAXLAND



INTERNAL
222 m²

EXTERNAL
24 m²

TOTAL
246 m²



The floor plan is not to scale; measurements are indicative and in metres. All features included in this 3D plan are for inspiration purposes only. This is not an exact replica of the property or the position of exterior elements. Plans should not be relied on. Interested parties should make and rely on their own enquiries.