



### 10 Elizabeth Road Mount Riverview NSW

3 1 1

**Location** - Perfectly perched on a corner block with mountain glimpses from the front porch this tidy home has you conveniently close to the local amenities including convenience store, café and bus stop within 130m and the revered local primary school within 500m, with a footpath the full way for comfortable walking access.

**Style** - A fresh brick veneer and tiled roof home with separate single garage. Modern upgrades have been completed inside to make a comfortable abode and for those keen to take it a step further, there is opportunity to expose the cypress pine floorboards through the living, dining, kitchen and hallway areas.

**Layout** - Comprising a lovely light filled living room upon

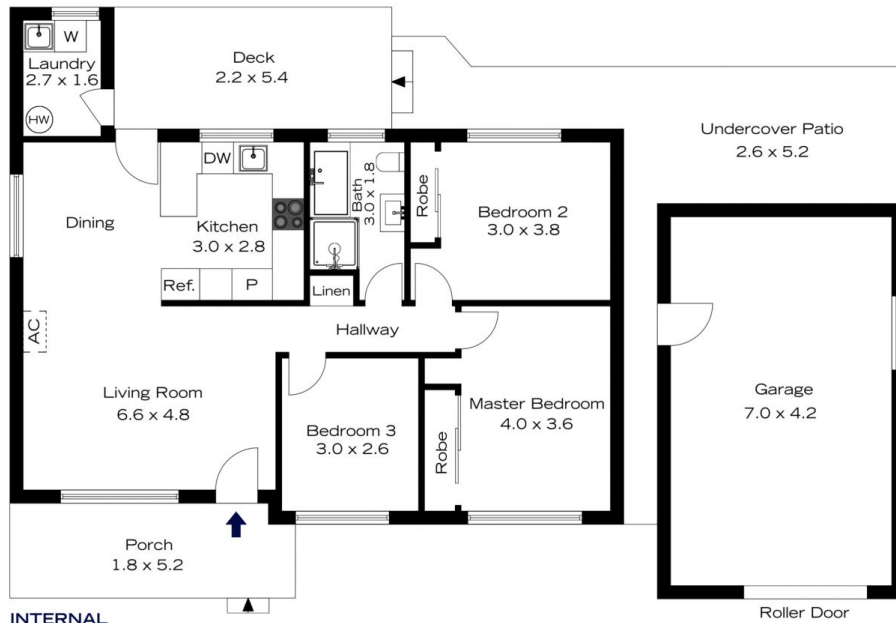
[For full version visit the website](https://www.chapmanrealestate.com.au)

**Type** : House  
**Price** : \$ 880,000  
**Land Size** : 510 sqm  
**View** : <https://www.chapmanrealestate.com.au/sale/nsw/hawkesbury/mount-riverview/residential/house/7839002>



**Kate Spence**  
02 4739 6200

# 10 ELIZABETH ROAD, MOUNT RIVERVIEW



INTERNAL  
80 m<sup>2</sup>

EXTERNAL  
45 m<sup>2</sup>

TOTAL  
125 m<sup>2</sup>



The floor plan is not to scale; measurements are indicative and in metres. Exterior elements are not in position. Plans should not be relied on. Interested parties should make and rely on their own enquiries.

# 10 ELIZABETH ROAD, MOUNT RIVERVIEW



INTERNAL  
80 m<sup>2</sup>

EXTERNAL  
45 m<sup>2</sup>

TOTAL  
125 m<sup>2</sup>



The floor plan is not to scale; measurements are indicative and in metres. All features included in this 3D plan are for inspiration purposes only. This is not an exact replica of the property or the position of exterior elements. Plans should not be relied on. Interested parties should make and rely on their own enquiries.