



9 Railway Parade Katoomba NSW

2 1

LOCATION - Positioned on 1,111m² of native bushland this 2 bedroom cottage is a hidden gem. Approximately 1.1km to Katoomba Town Centre and Station.

Conveniently located only 4km from the Scenic Railway, The Three Sisters, Echo Point and bush walks.

STYLE - This charming, light filled, comfortable two level cedar clad cottage is ready to move into. Accommodating 2 generous bedrooms, 1 bathroom/laundry, hallway, kitchen, living/dining plus large downstairs area and with bush views from every room. Lovely full width covered verandah at the main entrance plus a generous deck off the living area and a further deck off the lower room.

LAYOUT - Walk down the brick pathway to the bullnose verandah where you can sit and enjoy the peaceful bush views. Enter into the central hallway with a bedroom on

Type : House
Price : \$ 705,000
Land Size : 1111 sqm
View : <https://www.chapmanrealestate.com.au/sale/nsw/blue-mountains-surrounds/katoomba/residential/house/7817671>



Hayley Clifton
02 4782 5045

[For full version visit the website](https://www.chapmanrealestate.com.au)

9 RAILWAY PARADE, KATOOMBA



Lower Ground Floor



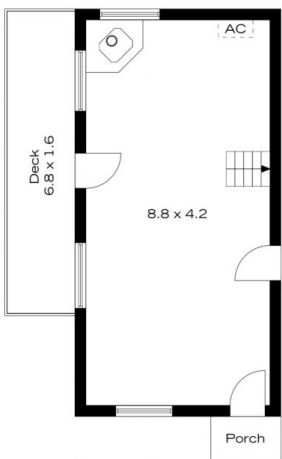
Ground Floor

INTERNAL
112 m²
EXTERNAL
46 m²
TOTAL
158 m²



The floor plan is not to scale; measurements are indicative and in metres. All features included in this 3D plan are for inspiration purposes only. This is not an exact replica of the property or the position of exterior elements. Plans should not be relied on. Interested parties should make and rely on their own enquiries.

9 RAILWAY PARADE, KATOOMBA



Lower Ground Floor



Ground Floor

INTERNAL
112 m²
EXTERNAL
46 m²
TOTAL
158 m²



The floor plan is not to scale; measurements are indicative and in metres. Exterior elements are not in position. Plans should not be relied on. Interested parties should make and rely on their own enquiries.